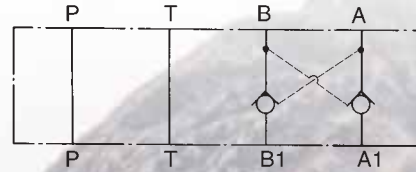



A SIMBOLI FUNZIONALI
FT3 - CP - AB

FT3 - CP - A

FT3 - CP - B

B PILOTING PRESSURE

To open the check valve through the action of the pilot piston, the piloting pressure must be equal or superior to the resulting value, ex. To release a check in A:

$$P_{a1} + P_m - P_a$$

$$P_p = P_b = + P_a$$

3.5

Where:

- P_p = piloting pressure;
- P_b = pressure in B;
- P_a = pressure in A;
- P_{a1} = pressure in A1;
- P_m = check valve opening pressure (spring) or to open the check in B:

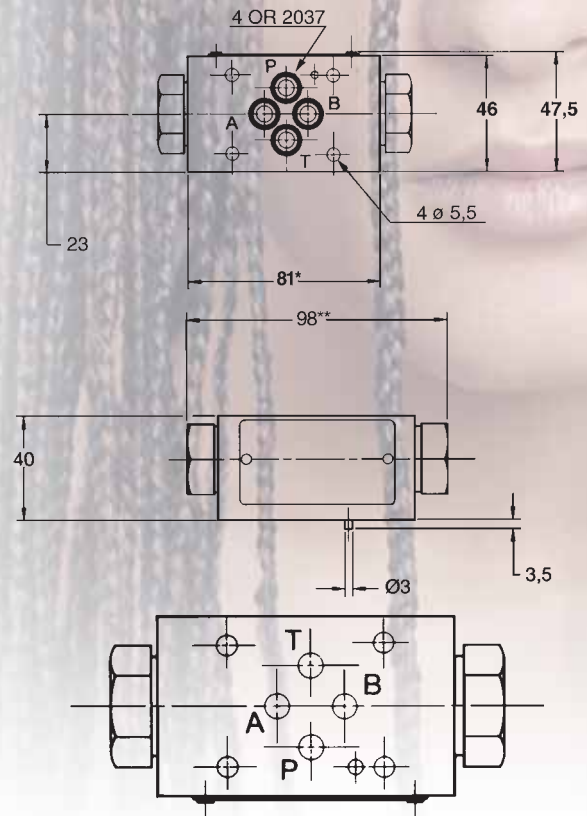
$$P_{b1} + P_m - P_b$$

$$P_p = P_a = + P_b$$

3.5

C DIMENSIONI DI MONTAGGIO

Tutte le quote sono espresse in mm


D DATA AND OPERATING PRESSURE

Recommended max. flow rate	1dm ³ /s (60 l/min)
Max. nominal pressure	32 MPa (320 bar)
Loss of pressure	see F
Pilot area ration piston/check valve	approx. 3,5
Piloting pressure	see B
Dimensions	see C
Mass	about 1 kg

VALVOLE MODULARI CETOP 03 UNIDIREZIONALI CON PILOTAGGIO IDRAULICO

Nei canali P e T il fluido idraulico passa liberamente; nei canali A e/o B dotati di valvola di controllo, il fluido passa da A → A1 (e/o B → B1) vincendo la molla ⑤ che tiene in chiusura l'otturatore ④ e, in mancanza di pressione di pilotaggio, è bloccato nel senso inverso, da A1 → A (e/o B1 → B); pressurizzando mediante elettrovalvola, per esempio la bocca B, si ha flusso da B → B1 e il pistone di pilotaggio ②, che scorre in posizione centrale, apre l'otturatore ⑤ posto sulla linea A e consente flusso da A1 → A.



CP

FT3

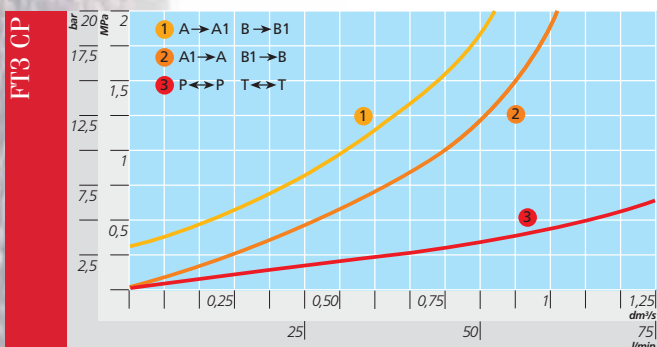
HOW TO READ THE MODEL CODE FOR VALVES FT3-CP

FT3 - CP - (AB) - * - ** / 10

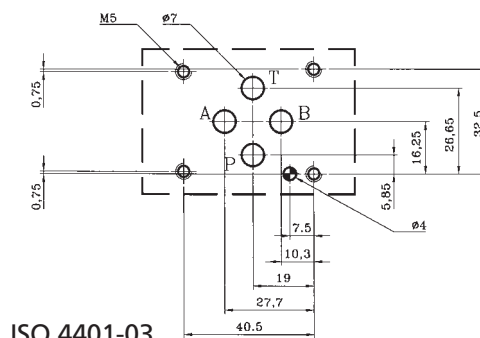
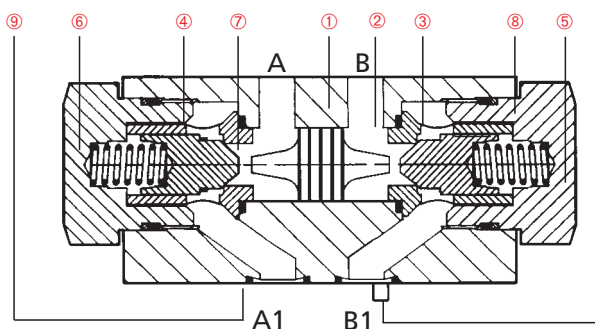
1 2 3 4 5 6

1	FT3	stackable valve CETOP 03 - Pressure 32 MPa (320 bar)
2	CO	one-way flow control valve, pilot operated (hydraulically)
3	(AB) A	service lines where the control operates; without piloting pressure see also functional symbols AB Flow blocked from A1 → A and from B1 → B A Flow blocked from A1 → A, free on B B Flow blocked from B1 → B, free on A
4		Opening pressure (Pm) of the one-way valve, for flow A → A1 and B → B1 without piloting - (no indication): Pm approx. 0.2 MPa (2 bar) 4 Pm approx. 0.4 MPa (4 bar)
5		Code reserved for special variants (seals, materials, surface treatments, etc.).
6		Design number (progressive) of the valve.

F DIAGRAMMI CARATTERISTICI



Relazioni Δp -Q tipiche per valvole FT3 - CP - AB, in versione standard, rilevate con fluido idraulico avente viscosità di 36 cSt a 50° C.



ISO 4401-03