

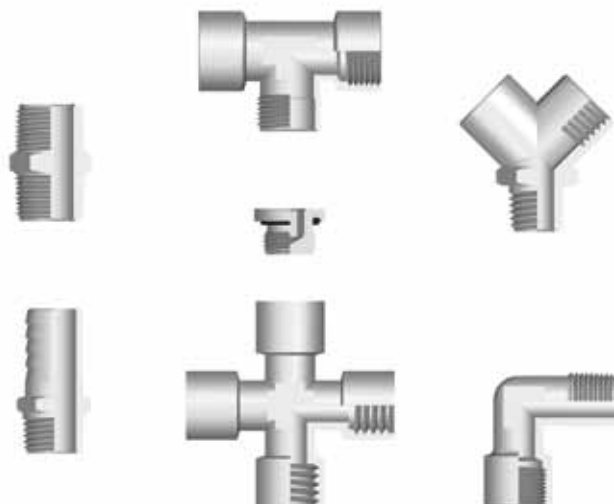


A
1800
15000

Serie **Accessories**

RACCORDI STANDARD
FIXTURES AND FITTINGS

Caratteristiche Tecniche / Technical Characteristics



Pressioni e Temperature / Pressures and Temperatures

Data la varietà dei prodotti che compongono questa gamma, non é possibile definire valori di temperatura e pressione per tutti gli articoli. **Di seguito riportiamo le pressioni e temperature massime consigliate per gli articoli dal 2000 al 6080 che non hanno o-ring; in tal caso consultare i valori di temperatura e pressione direttamente sulla tabella dell'articolo.**

Given the vastness of this range, it is not possible to define the exact values of temperature and pressure valid for all the items. Hereunder, we specify the values of the maximum pressure advised, from the art. 2000 to the 6080 that have not o-ring; in which case refer to the temperature and pressure directly on the table the article.

MISURA SIZE	PRESSIONE MASSIMA CONSIGLIATA MAXIMUM PRESSURE ADVISED	TEMPERATURA MASSIMA MAXIMUM TEMPERATURE
1/8	150 bar	300° C
1/4	100 bar	300° C
3/8	75 bar	300° C
1/2	50 bar	300° C
3/4	85 bar	300° C
1"	80 bar	300° C

I valori di pressione in tabella sono stati ottenuti adottando un Coefficiente di sicurezza 4. Per impieghi in condizioni particolari vogliate consultarci.

It must be taken into account that the pressure values indicated are calculated considering a Safety Factor of 4. We advised you to contact us if You use them in particular working conditions.

Materiali e Componenti / Component Parts and Materials

La maggior parte degli articoli di questa serie é composta da un unico particolare in OT UNI EN 12164/5 CW 614/7N e subisce un trattamento galvanico di nichelatura.

The main part of these fittings is made in OT UNI EN 12164/5 CW 614/7N and undergo to a nickel-plating process.

Articoli prodotti in materiali diversi, verranno specificati all' interno del catalogo.

Different materials will be specified in the catalogue.

Filettature / Threads

Gas conica conforme ISO 7.1, BS 21, DIN 2999 / Tapered gas in conformity with ISO7.1, BS 21, DIN 2999.

Gas cilindrica conforme ISO 228 Classe A / Parallel gas in conformity with ISO 228 Class A.

Metrica conforme ISO R/262 / Metric in conformity with ISO R/262.

Tubi di collegamento / Connection Tubes

Tubi e raccordi in genere.
Tubes and fittings in general.

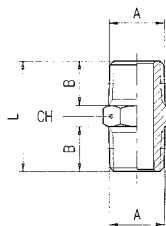
Fluidi compatibili / Fluid

Acqua, olio, aria compressa, fluidi in genere per l'impiantistica idraulica, oleodinamica, idropneumatica, ecc.

Water, oils, compressed air, fluids in general for the hydraulic, pneumatic and oildynamic plants etc.

2000

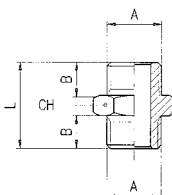
NIPPO CONICO - NIPPLE (TAPER)



Codice Code	A	B	L	CH	Conf. Pack.
0200000102NB	1/8	7.5	19.5	12	50
0200000103NB	1/4	11	27	14	50
0200000104NB	3/8	11.5	28	17	25
0200000105NB	1/2	14	33.5	22	25
0200000107NB	3/4	16.5	40	27	25
0200000109NT	1"	19	46.5	34	10

2010

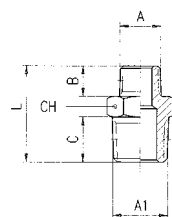
NIPPO CILINDRICO - NIPPLE (PARALLEL)



Codice Code	A	B	L	CH	Conf. Pack.
020100001B5NB	M5	4	11.5	8	50
02010000102NB	1/8	6	16.5	14	50
02010000103NB	1/4	8	21	17	50
02010000104NB	3/8	9	23	19	25
02010000105NB	1/2	10	25.5	24	25

2020

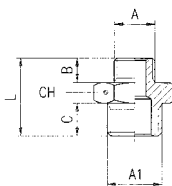
NIPPO DI RIDUZIONE CONICO - REDUCING NIPPLE (TAPER)



Codice Code	A	A1	B	C	L	CH	Conf. Pack.
020200001ATNB	1/8	1/4	7.5	11	23.5	14	50
0202000013WNB	1/8	3/8	7.5	11.5	24	17	25
0202000014WNB	1/8	1/2	7.5	14	27	22	25
0202000017WNB	1/4	3/8	11	11.5	27.5	17	25
0202000018WNB	1/4	1/2	11	14	30.5	22	25
020200001ACNB	3/8	1/2	11.5	14	31	22	25
020200001AHNB	1/2	3/4	14	16.5	37.5	27	25
020200001ASNT	3/4	1"	16.5	19	44	34	10

2030

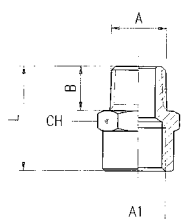
NIPPO DI RIDUZIONE CILINDRICO - REDUCING NIPPLE (PARALLEL)



Codice Code	A	A1	B	C	L	CH	Conf. Pack.
0203000010WNB	M5	1/8	4	6	14.5	14	50
020300001ATNB	1/8	1/4	6	8	19	17	50
0203000013WNB	1/8	3/8	6	9	20	19	50
0203000017WNB	1/4	3/8	8	9	22	19	50
0203000018WNB	1/4	1/2	8	10	23.5	24	25
020300001ACNB	3/8	1/2	9	10	24.5	24	25
020300001AHNT	1/2	3/4	10	12	27.5	30	25

2040

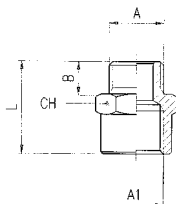
RIDUZIONE CONICA - REDUCER (TAPER)



Codice Code	A	A1	B	L	CH	Conf. Pack.
0204000012WNB	1/8	1/8	7.5	20	14	50
020400001ATNB	1/8	1/4	7.5	22	17	50
0204000013WNB	1/8	3/8	7.5	23	22	25
0204000016WNB	1/4	1/4	11	26	17	25
0204000017WNB	1/4	3/8	11	27	22	25
0204000018WNB	1/4	1/2	11	30	26	25
020400001ABNB	3/8	3/8	11.5	27.5	22	25
020400001ACNB	3/8	1/2	11.5	30.5	26	25
020400001AGNB	1/2	1/2	14	33	26	25
020400001AHNB	1/2	3/4	14	35	32	25

2050

RIDUZIONE CILINDRICA - REDUCER (PARALLEL)

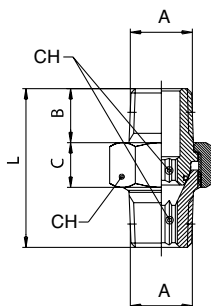


Codice Code	A	A1	B	L	CH	Conf. Pack.
0205000010WNB	M5	1/8	4	14.5	14	50
0205000012WNB	1/8	1/8	6	17	14	50
020500001ATNB	1/8	1/4	6	20.5	17	50
0205000013WNB	1/8	3/8	6	21.5	22	25
0205000016WNB	1/4	1/4	8	22.5	17	25
0205000017WNB	1/4	3/8	8	23.5	22	25
0205000018WNB	1/4	1/2	8	26.5	26	25
020500001ABNB	3/8	3/8	9	24.5	22	25
020500001ACNB	3/8	1/2	9	27.5	26	25
020500001AGNB	1/2	1/2	10	28.5	26	25

2060

NIPPLLO CONICO ORIENTABILE (3 pezzi) - TAPER NIPPLE (3 pieces)

ARTICOLO NON NICHELATO
ARTICLE NOT NICHEL-PLATED



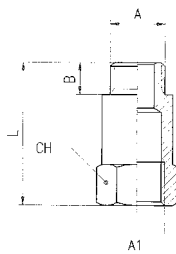
Codice Code	A	B	C	L	CH1	CH2	Conf. Pack.
0206000001	1/8	7.5	8.5	27	15	5	25
0206000002	1/4	11	9.5	33.5	19	6	25
0206000003	3/8	11.5	10	36.5	22	8	10
0206000004	1/2	14	12	45	27	12	10
0206000005	3/4	16.5	17	54	36	14	5
0206000006	1"	19	20	65	46	19	1

Temperatura minima / Minimum temperature: -20 °C
Temperatura massima / Maximum temperature: +80 °C

Pressione minima / Minimum pressure: -0.99 bar (-0.099 MPa)
Pressione massima / Maximum pressure: +15 bar (1.5 MPa)

2070

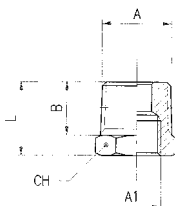
PROLUNGA CILINDRICA - EXTENSION (PARALLEL)



Codice Code	A	A1	L	B	CH	Conf. Pack.
020700001BHNB	1/8	1/8	22	6	14	25
020700001BINB	1/8	1/8	42	6	14	25
020700001BLNB	1/4	1/4	35	8	17	25
020700001BMNB	1/4	1/4	51	8	17	25

2080

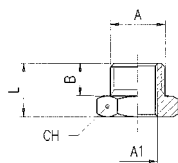
RIDUZIONE CONICA - REDUCER (TAPER)



Codice Code	A	A1	B	L	CH	Conf. Pack.
0208000015WNB	1/4	1/8	11	16	14	50
0208000019WNB	3/8	1/8	11.5	16.5	17	50
020800001ADNB	1/2	1/8	14	19.5	22	25
020800001AANB	3/8	1/4	11.5	16.5	17	50
020800001AENB	1/2	1/4	14	19.5	22	25
020800001AFNB	1/2	3/8	14	19.5	22	25
020800001ALNB	3/4	3/8	16.5	23.5	27	25
020800001AMNB	3/4	1/2	16.5	23.5	27	25
020800001APNT	1"	1/2	19	27.5	34	10
020800001AQNT	1"	3/4	19	27.5	34	10
020800001ARNT	1"1/4	1/2	22	31	45	10
020800001AUNT	1"1/4	3/4	22	31	45	10
020800001AVNT	1"1/4	1"	22	31	45	10
02080000182NT	1"1/2	1"	22	32	50	5
02080000183NT	2"	1"	24	36	60	5

2090

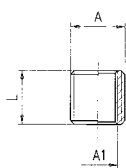
RIDUZIONE CILINDRICA - REDUCER (PARALLEL)



Codice Code	A	A1	B	L	CH	Conf. Pack.
0209000010WNT	1/8	M5	6	10.5	14	50
0209000015WNT	1/4	1/8	8	13	17	50
0209000019WNT	3/8	1/8	9	14	19	25
020900001ADNT	1/2	1/8	10	15.5	24	25
020900001AANT	3/8	1/4	9	14	19	25
020900001AENT	1/2	1/4	10	15.5	24	25
020900001AFNT	1/2	3/8	10	15.5	24	25
020900001ALNT	3/4	3/8	12	17.5	30	25
020900001AMNT	3/4	1/2	12	17.5	30	25

2095

RIDUZIONE CILINDRICA - REDUCER (PARALLEL)

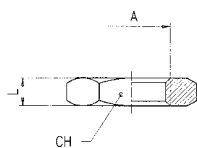


ARTICOLO NON NICHELATO
ARTICLE NOT NICHEL-PLATED

Codice Code	A	A1	L	Conf. Pack.
0209500015W00	1/4	1/8	8	50
020950001AA00	3/8	1/4	9	50
020950001AF00	1/2	3/8	10	50
020950001AM00	3/4	1/2	14	25
020950001AQ00	1"	3/4	20	25

2096

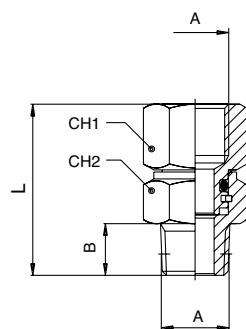
GHIERA - NUT



Codice Code	A	L	CH	Conf. Pack.
02096000102NB	1/8	4.5	14	50
02096000103NB	1/4	5	17	50
02096000104NB	3/8	6	20	50
02096000105NB	1/2	6	24	50

2110

NIPPLO CONICO ORIENTABILE - ORIENTING NIPPLE (TAPER)



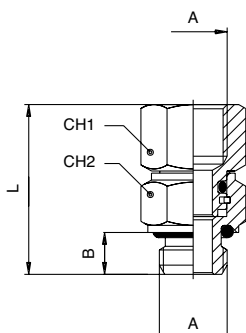
Codice Code	A	B	CH1	CH2	L	Conf. Pack.
0211000001	1/8	7.5	13	13	25	50
0211000002	1/4	11	16	15	33	25
0211000003	3/8	11.5	20	17	35.5	25

Temperatura minima / Minimum temperature: -20 °C
Temperatura massima / Maximum temperature: +80 °C

Pressione minima / Minimum pressure: -0.99 bar (-0.099 MPa)
Pressione massima / Maximum pressure: +15 bar (1.5 MPa)

2115

NIPPLO CILINDRICO ORIENTABILE - ORIENTING NIPPLE (PARALLEL)



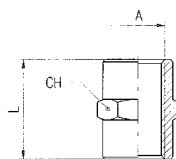
Codice Code	A	B	CH1	CH2	L	Conf. Pack.
0211500001	1/8	6	13	13	24.5	50
0211500002	1/4	8	16	16	31	25
0211500003	3/8	9	20	18	34.5	25

Temperatura minima / Minimum temperature: -20 °C
Temperatura massima / Maximum temperature: +80 °C

Pressione minima / Minimum pressure: -0.99 bar (-0.099 MPa)
Pressione massima / Maximum pressure: +15 bar (1.5 MPa)

3000

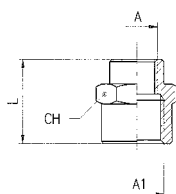
MANICOTTO - SLEEVE



Codice Code	A	L	CH	Conf. Pack.
03000001B5NB	M5	11	8	50
0300000102NB	1/8	15	14	50
0300000103NB	1/4	22	17	25
0300000104NB	3/8	24	22	25
0300000105NB	1/2	30	26	25
0300000107NB	3/4	32	32	25
0300000109NB	1"	46	40	10

3010

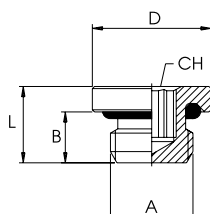
MANICOTTO DI RIDUZIONE - REDUCING SLEEVE



Codice Code	A	A1	L	CH	Conf. Pack.
0301000010WNB	M5	1/8	13	14	50
030100001ATNB	1/8	1/4	19	17	50
0301000013WNB	1/8	3/8	20	22	25
0301000014WNB	1/8	1/2	24	24	25
0301000017WNB	1/4	3/8	23	22	25
0301000018WNB	1/4	1/2	25	24	25
030100001ACNB	3/8	1/2	27.5	24	25
030100001AHNB	1/2	3/4	30	30	25
030100001AINB	1/2	1"	39	40	10
030100001ASNB	3/4	1"	41	40	10

3015

TAPPO MASCHIO CILINDRICO ESAGONO INCASSATO CON O-RING NBR - MALE PLUG (PARALLEL) WITH EXAGON EMBEDDED AND NBR O-RING



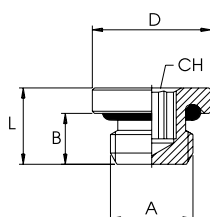
Codice Code	A	B	L	D	CH	Conf. Pack.
0301500005	M5	4	6	8	2	50
0301500001	1/8	6	8.5	14	5	50
0301500002	1/4	8	11	17	6	50
0301500003	3/8	9	12.5	20	8	25
0301500004	1/2	10	13.5	25	10	25

Temperatura minima / Minimum temperature: -20 °C
 Temperatura massima / Maximum temperature: +80 °C

Pressione minima / Minimum pressure: -0.99 bar (-0.099 MPa)
 Pressione massima / Maximum pressure: +15 bar (1.5 MPa)

3015V

TAPPO MASCHIO CILINDRICO ESAGONO INCASSATO CON O-RING FKM-MALE PLUG (PARALLEL) WITH EXAGON EMBEDDED AND FKM O-RING



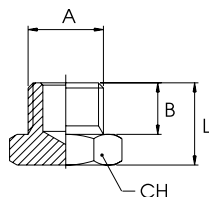
Codice Code	A	B	L	D	CH	Conf. Pack.
03015V0005	M5	4	6	8	2	50
03015V0001	1/8	6	8.5	14	5	50
03015V0002	1/4	8	11	17	6	50
03015V0003	3/8	9	12.5	20	8	25
03015V0004	1/2	10	13.5	25	10	25

Temperatura minima / Minimum temperature: -15 °C
 Temperatura massima / Maximum temperature: +200 °C

Pressione minima / Minimum pressure: -0.99 bar (-0.099 MPa)
 Pressione massima / Maximum pressure: +15 bar (1.5 MPa)

3020

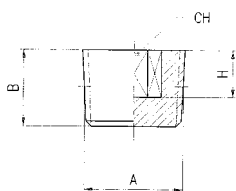
TAPPO MASCHIO CILINDRICO - MALE PLUG (PARALLEL)



Codice Code	A	B	L	CH	Conf. Pack.
030200001B5NB	M5	4.5	8	8	50
03020000102NB	1/8	6.5	10	14	50
03020000103NB	1/4	9	13	17	50
03020000104NB	3/8	9.5	13.5	19	25
03020000105NB	1/2	10	14.5	24	25
03020000107NB	3/4	11	16	30	25
03020000109NB	1"	12	17	40	10

3025

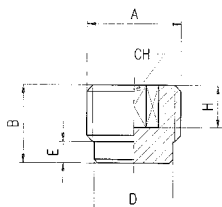
TAPPO MASCHIO CONICO - MALE PLUG (TAPER)



Codice Code	A	B	H	CH	Conf. Pack.
03025000102NB	1/8	7.5	5	5	50
03025000103NB	1/4	10	7	6	50
03025000104NB	3/8	11	7	8	50
03025000105NB	1/2	13	8	10	25

3026

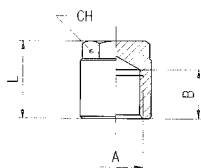
TAPPO MASCHIO CILINDRICO - MALE PLUG (PARALLEL)



Codice Code	A	B	D	E	H	CH	Conf. Pack.
03026000102NB	1/8	8	8	2	5	5	50
03026000103NB	1/4	11	11	3	7	6	50
03026000104NB	3/8	12.5	14.5	3.5	8.5	8	50
03026000105NB	1/2	14	18	4	10	10	25
03026000107NB	3/4	14	21.5	3	10	12	25

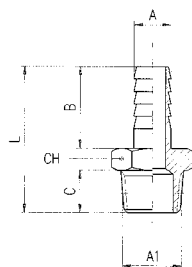
3030

TAPPO FEMMINA - FEMALE PLUG



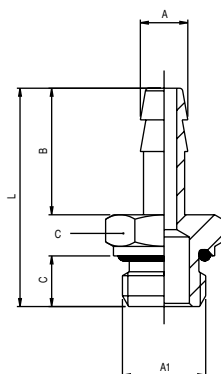
Codice Code	A	B	L	CH	Conf. Pack.
03030000102NB	1/8	7.5	11	12	50
03030000103NB	1/4	11	19	14	50
03030000104NB	3/8	11.5	20	17	25
03030000105NB	1/2	14	22	19	25

3040

PORTAGOMMA MASCHIO CONICO - MALE HOSE ADAPTER (TAPER)


Codice Code	A	A1	B	C	L	CH	Conf. Pack.
03040001BSNB	6	1/8	19.5	7.5	32	12	50
03040001BTNB	6	1/4	19.5	11	35.5	14	50
03040001BZNB	7	1/8	19.5	7.5	32	12	50
03040001BXNB	7	1/4	19.5	11	35.5	14	50
03040001BYNB	8	1/8	19.5	7.5	32	12	50
03040001BJNB	8	1/4	19.5	11	35.5	14	50
03040001CANB	9	1/8	19.5	7.5	32	12	50
03040001CBNB	9	1/4	19.5	11	35.5	14	50
03040001CCNB	9	3/8	19.5	11.5	36	17	25
03040001CDNB	9	1/2	19.5	14	39	22	25
03040001CENB	10	1/8	19.5	7.5	32	12	50
03040001CFNB	10	1/4	19.5	11	35.5	14	50
03040001CGNB	10	3/8	19.5	11.5	36	17	25
03040001CHNB	10	1/2	19.5	14	39	22	25
03040001CINB	12	1/4	19.5	11	35.5	14	50
03040001CLNB	12	3/8	19.5	11.5	36	17	25
03040001CMNB	12	1/2	19.5	14	39	22	25
03040001CNNB	14	3/8	19.5	11.5	36	17	25
03040001DBNB	14	1/2	19.5	14	39	22	25
03040001CQNB	16	3/8	19.5	11.5	36	17	25
03040001CRNB	16	1/2	19.5	14	39	22	25
03040001CSNB	16	3/4	19.5	16.5	43.5	27	25
03040001CTNB	17	3/8	19.5	11.5	36	18	25
03040001CUNB	17	1/2	19.5	14	39	22	25
03040001CVNB	18	3/8	19.5	11.5	36	19	25
03040001CZNB	18	1/2	19.5	14	39	22	25
03040001CXNB	18	3/4	19.5	16.5	43.5	27	25
03040001CYNB	20	3/8	19.5	11.5	36	21	25
03040001C1NB	20	1/2	30	14	49.5	22	25
03040001R8NB	20	3/4	30	13.5	50.5	27	25
03040001C4NB	25	3/4	30	14.5	51.5	27	25
03040001DLNB	25	1"	30	16	53.5	34	10

3044

PORTAGOMMA MASCHIO CILINDRICO CON O - RING - MALE HOSE ADAPTER (PARALLEL) WITH O - RING


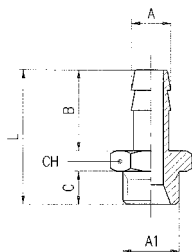
Codice Code	A	A1	B	C	L	CH	Conf. Pack.
0304400001	4.5	M5	15	4	24	8	50
0304400002	7	1/8	20	6	31	13	50
0304400003	7	1/4	20	8	34.5	16	50
0304400004	8	1/8	20	6	31	13	50
0304400005	8	1/4	20	8	34.5	16	50
0304400006	9	1/8	20	6	31	13	50
0304400007	9	1/4	20	8	34.5	16	50
0304400008	9	3/8	20	9	35.5	19	25
0304400009	12	1/4	20	8	34.5	16	25
0304400010	12	3/8	20	9	35.5	19	25
0304400011	12	1/2	22	10	39.5	24	25
0304400012	17	3/8	24	9	39.5	19	25
0304400013	17	1/2	24	10	41.5	24	25

Temperatura minima / Minimum temperature: -20 °C
Temperatura massima / Maximum temperature: +80 °C

Pressione minima / Minimum pressure: -0.99 bar (-0.099 MPa)
Pressione massima / Maximum pressure: +15 bar (1.5 MPa)

3045

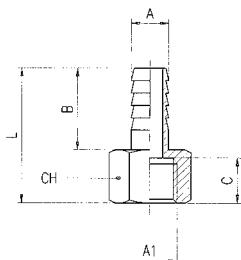
PORTAGOMMA MASCHIO CILINDRICO - MALE HOSE ADAPTER (PARALLEL)



Code Code	A	A1	B	C	L	CH	Conf. Pack.
0304500018SNB	4.5	M5	15	4	23	8	50
030450001BZNB	7	1/8	20	6	30	14	50
030450001BXNB	7	1/4	20	8	33	17	50
030450001BYNB	8	1/8	20	6	30	14	50
030450001BJNB	8	1/4	20	8	33	17	50
030450001CANB	9	1/8	20	6	30	14	50
030450001CBNB	9	1/4	20	8	33	17	50
030450001CCNB	9	3/8	20	9	34	19	25
030450001CINB	12	1/4	20	8	33	17	25
030450001CLNB	12	3/8	20	9	34	19	25
030450001CMNB	12	1/2	22	10	37.5	24	25
030450001CTNB	17	3/8	24	9	38	19	25
030450001CUNB	17	1/2	24	10	39.5	24	25

3050

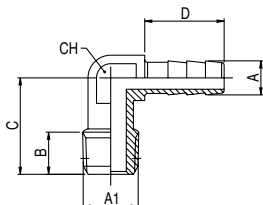
PORTAGOMMA FEMMINA - FEMALE HOSE ADAPTER



Code Code	A	A1	B	C	L	CH	Conf. Pack.
030500001BSNB	6	1/8	19.5	8.5	30	14	50
030500001BZNB	7	1/8	19.5	8.5	30	14	50
030500001BXNB	7	1/4	19.5	11	32.5	17	50
030500001BJNB	8	1/4	19.5	11	32.5	17	50
030500001CBNB	9	1/4	19.5	11	32.5	17	50
030500001CCNB	9	3/8	19.5	11.5	33.5	20	25
030500001CGNB	10	3/8	19.5	11.5	33.5	20	25
030500001CLNB	12	3/8	19.5	11.5	33.5	20	25
030500001CMNB	12	1/2	19.5	14.5	37.5	24	25

3055

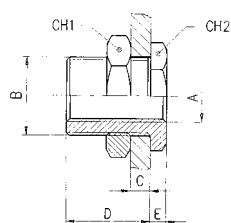
RACCORDO A L PORTAGOMMA MASCHIO - MALE HOSE ADAPTER ELBOW



Code Code	A	A1	B	C	D	CH	Conf. Pack.
030550001BSNB	6	1/8	7.5	17	14	11	50
030550001BTNB	6	1/4	11	22	14	11	50
030550001BZNB	7	1/8	7.5	17	14	11	25
030550001BXNB	7	1/4	11	22	14	11	25
030550001CBNB	9	1/4	11	22	14	11	25

3060

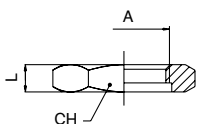
RACCORDO DI ATTRAVERSAMENTO - BULKHEAD CONNECTOR



Code Code	A	B	C MAX	D	E	CH1	CH2	Conf. Pack.
0306000001	M5	M10x1	7	10.5	3.5	14	14	25
0306000002	1/8	M16x1.5	10	14	4	22	19	25
0306000003	1/4	M20x1.5	16	21	4	27	24	25
0306000004	3/8	M26x1.5	15	21	5	32	30	25
0306000005	1/2	M28x1.5	21	27	6	36	32	10

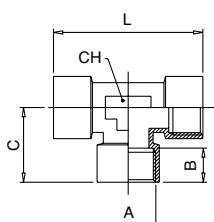
1704

GHIERA - NUT



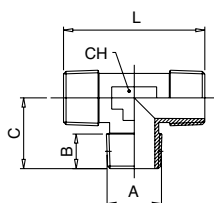
Code Code	A	CH	L	Conf. Pack.
017040001C8NB	M10x1	14	4	50
017040001E3NB	M16x1.5	22	5	50
017040001F2NB	M20x1.5	27	6	50
017040001OVNB	M26x1.5	32	7	50
017040001H1NB	M28x1.5	36	7	50

4000

RACCORDO A T FEMMINA - FEMALE TEE


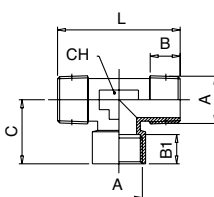
Codice Code	A	B	C	L	CH	Conf. Pack.
0400000102NB	1/8	8.5	19.5	39	12	25
0400000103NB	1/4	11	24.5	49	13	25
0400000104NB	3/8	12	27	54	16	25
0400000105NB	1/2	15	32	64	20	10
0400000107NT	3/4	16.5	36.5	73	27	10
0400000109NT	1"	19	45	90	30	5

4010

RACCORDO A T MASCHIO - MALE TEE


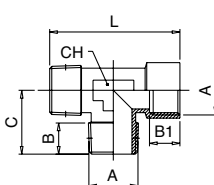
Codice Code	A	B	C	L	CH	Conf. Pack.
04010000102NB	1/8	8	17.5	35	12	25
04010000103NB	1/4	11	23	46	13	25
04010000104NB	3/8	11.5	25.5	51.5	16	25
04010000105NB	1/2	14	29.5	59	20	10
04010000107NT	3/4	14.5	32	64	27	10
04010000109NT	1"	16.8	39	78	30	5

4020

RACCORDO A T FEMMINA CENTRALE - CENTRE LEG FEMALE TEE


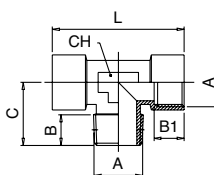
Codice Code	A	B	B1	C	L	CH	Conf. Pack.
04020000102NB	1/8	8	8.5	19.5	35	12	25
04020000103NB	1/4	11	11	24.5	46	13	25
04020000104NB	3/8	11.5	12	27	51	16	25
04020000105NB	1/2	14	15	32	59	20	10
04020000107NT	3/4	14.5	16.5	36.5	64	27	10
04020000109NT	1"	16.8	19	45	78	30	5

4030

RACCORDO A T FEMMINA LATERALE - OFF SET FEMALE TEE


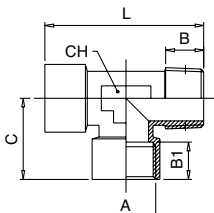
Codice Code	A	B	B1	C	L	CH	Conf. Pack.
04030000102NB	1/8	8	8.5	17.5	37	12	25
04030000103NB	1/4	11	11	23	47.5	13	25
04030000104NB	3/8	11.5	12	25.5	52.5	16	25
04030000105NB	1/2	14	15	29.5	61.5	20	10
04030000107NT	3/4	14.5	16.5	32	68.5	27	10
04030000109NT	1"	16.8	19	39	84	30	5

4040

RACCORDO A T MASCHIO CENTRALE - CENTRE LEG MALE TEE


Codice Code	A	B	B1	C	L	CH	Conf. Pack.
04040000102NB	1/8	8	8.5	17.5	39	12	25
04040000103NB	1/4	11	11	23	49	13	25
04040000104NB	3/8	11.5	12	25.5	54	16	25
04040000105NB	1/2	14	15	29.5	64	20	10
04040000107NT	3/4	14.5	16.5	32	73	27	10
04040000109NT	1"	16.8	19	39	90	30	5

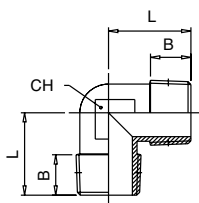
4050

RACCORDO A T MASCHIO LATERALE - OFF SET MALE TEE


Codice Code	A	B	B1	C	L	CH	Conf. Pack.
04050000102NB	1/8	8	8.5	19.5	37	12	25
04050000103NB	1/4	11	11	24.5	47.5	13	25
04050000104NB	3/8	11.5	12	27	52.5	16	25
04050000105NB	1/2	14	15	32	61.5	20	10
04050000107NT	3/4	14.5	16.5	36.5	68.5	27	10
04050000109NT	1"	16.8	19	45	84	30	5

5000

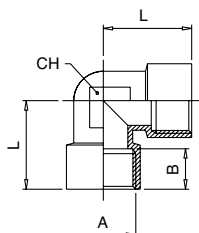
RACCORDO A L MASCHIO - MALE ELBOW



Codice Code	A	B	L	CH	Conf. Pack.
0500000102NB	1/8	7.5	18	11	50
0500000103NB	1/4	11	24	13	25
0500000104NB	3/8	12	27	17	25
0500000105NB	1/2	14	29.5	20	25
0500000107NT	3/4	14.5	32	27	10
0500000109NT	1"	16.8	39	30	5

5010

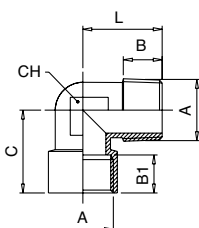
RACCORDO A L FEMMINA - FEMALE ELBOW



Codice Code	A	B	L	CH	Conf. Pack.
05010000102NB	1/8	8.5	21	11	50
05010000103NB	1/4	11	25.5	13	25
05010000104NB	3/8	11.5	28	17	25
05010000105NB	1/2	15	32	20	25
05010000107NT	3/4	16.5	36.5	27	10
05010000109NT	1"	19	45	30	5

5020

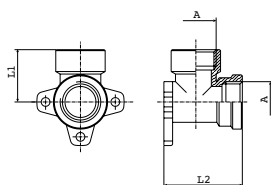
RACCORDO A L MASCHIO-FEMMINA - MALE-FEMALE ELBOW



Codice Code	A	B	B1	C	L	CH	Conf. Pack.
05020000102NB	1/8	7.5	8.5	21	18	11	50
05020000103NB	1/4	11	11	25.5	24	13	25
05020000104NB	3/8	11.5	12	28	27	17	25
05020000105NB	1/2	14	15	32	29.5	20	25
05020000107NT	3/4	14.5	16.5	36.5	32	27	10
05020000109NT	1"	16	19	45	39	30	5

5050

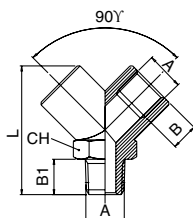
RACCORDO A STAFFA 90° FEMMINA - FEMALE BRACKET FITTING 90°



Codice Code	A	L1	L2	Conf. Pack.
05050000105NB	1/2	27	40.5	10

6000

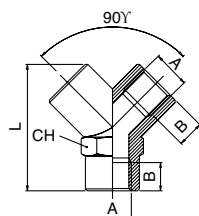
RACCORDO A Y 90° MASCHIO - MALE Y 90°



Codice Code	A	B	B1	L	CH	Conf. Pack.
06000000102NB	1/8	8.5	9	33	14	25
06000000103NB	1/4	11	11	37	17	25
06000000104NB	3/8	11.5	12.5	46	22	20
06000000105NB	1/2	14	16.5	58	26	10

6010

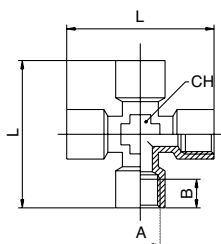
RACCORDO A Y 90° FEMMINA - FEMALE Y 90°



Codice Code	A	B	L	CH	Conf. Pack.
06010000102NB	1/8	8.5	33	14	25
06010000103NB	1/4	11	37	17	25
06010000104NB	3/8	11.5	46	22	20
06010000105NB	1/2	14	58	26	10

6020

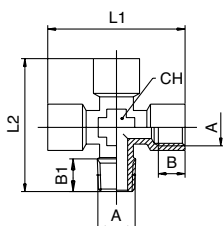
RACCORDO A CROCE FEMMINA - FEMALE EQUAL CROSS



Codice Code	A	B	L	CH	Conf. Pack.
06020000102NB	1/8	8.5	39	11	25
06020000103NB	1/4	11	50	13	25
06020000104NB	3/8	12	56	17	10
06020000105NB	1/2	15	64	20	10

6025

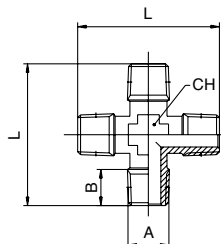
RACCORDO A CROCE MASCHIO-FEMMINA - MALE-FEMALE EQUAL CROSS



Codice Code	A	B	B1	L1	L2	CH	Conf. Pack.
06025000102NB	1/8	8.5	8	39	37	11	25
06025000103NB	1/4	11	11	50	48.5	13	25
06025000104NB	3/8	12	11.5	56	54	17	10
06025000105NB	1/2	15	14	64	61	20	10

6030

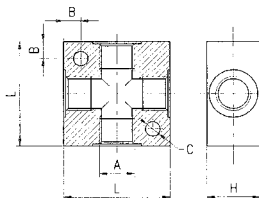
RACCORDO A CROCE MASCHIO - MALE EQUAL CROSS



Codice Code	A	B	L	CH	Conf. Pack.
06030000102NB	1/8	8	35	11	25
06030000103NB	1/4	11	47	13	25
06030000104NB	3/8	11.5	52	17	10
06030000105NB	1/2	14	58	20	10

6040

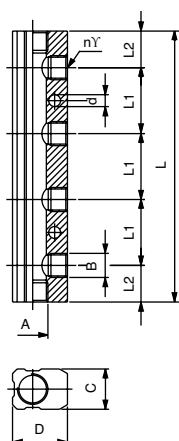
RACCORDO A CROCE IN ALLUMIMIO - ALUMINIUM TEE CROSS



Codice Code	A	L	H	B	C	Conf. Pack.
06040001102AG	1/8	25	15	4.3	4.5	25
06040001103AG	1/4	40	20	6.5	5.5	10
06040001104AG	3/8	50	25	7.5	5.5	5
06040001105AG	1/2	50	30	7.5	5.5	5

6047

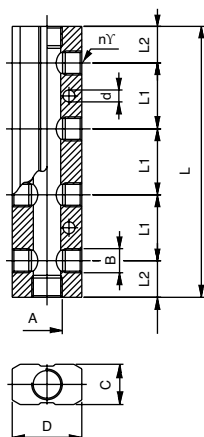
RIPARTITORE IN ALLUMIMIO - ALUMINIUM DISTRIBUTION MANIFOLD



Codice Code	A	B	n°	C	D	L1	L2	L	d	Conf. Pack.
060470011AJAG	1/4	1/8	2	18	24	30	17.5	65	4.5	5
060470011AKAG	1/4	1/8	3	18	24	30	17.5	95	4.5	5
060470011AWAG	1/4	1/8	4	18	24	30	17.5	125	4.5	5
060470011BAAG	1/4	1/8	5	18	24	30	17.5	155	4.5	5
060470011BBAG	1/4	1/8	6	18	24	30	17.5	185	4.5	5
060470011BCAG	3/8	1/4	2	22	30	36	20	76	5.5	5
060470011BDAG	3/8	1/4	3	22	30	36	20	112	5.5	5
060470011BEAG	3/8	1/4	4	22	30	36	20	148	5.5	5
060470011BFAG	3/8	1/4	5	22	30	36	20	184	5.5	5
060470011BGAG	3/8	1/4	6	22	30	36	20	220	5.5	5
060470011ESAG	1/2	3/8	2	26	35	40	25	90	5.5	5
060470011ETAG	1/2	3/8	3	26	35	40	25	130	5.5	5
060470011EUAG	1/2	3/8	4	26	35	40	25	170	5.5	5
060470011EVAG	1/2	3/8	5	26	35	40	25	210	5.5	5
060470011EZAG	1/2	3/8	6	26	35	40	25	250	5.5	5

6048

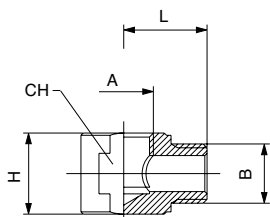
RIPARTITORE DOPPIO IN ALLUMINIO - ALUMINIUM DOUBLE DISTRIBUTION MANIFOLD



Codice Code	A	B	n°	C	D	L1	L2	L	d	Conf. Pack.
060480011AJAG	1/4	1/8	2	18	30	30	17.5	65	4.5	5
060480011AKAG	1/4	1/8	3	18	30	30	17.5	95	4.5	5
060480011AWAG	1/4	1/8	4	18	30	30	17.5	125	4.5	5
060480011BAAG	1/4	1/8	5	18	30	30	17.5	155	4.5	5
060480011BBAG	1/4	1/8	6	18	30	30	17.5	185	4.5	5
060480011BCAG	3/8	1/4	2	22	38	36	20	76	5.5	5
060480011BDAG	3/8	1/4	3	22	38	36	20	112	5.5	5
060480011BEAG	3/8	1/4	4	22	38	36	20	148	5.5	5
060480011BFAG	3/8	1/4	5	22	38	36	20	184	5.5	5
060480011BGAG	3/8	1/4	6	22	38	36	20	220	5.5	5
060480011ESAG	1/2	3/8	2	26	44	40	25	90	5.5	5
060480011ETAG	1/2	3/8	3	26	44	40	25	130	5.5	5
060480011EUAG	1/2	3/8	4	26	44	40	25	170	5.5	5
060480011EVAG	1/2	3/8	5	26	44	40	25	210	5.5	5
060480011EZAG	1/2	3/8	6	26	44	40	25	250	5.5	5

6070

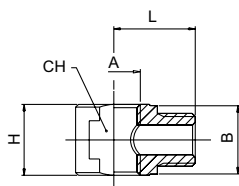
RACCORDO A L MASCHIO-FEMMINA - MALE-FEMALE ELBOW FITTING



Codice Code	A	B	H	L	CH	Conf. Pack.
0607000012WNB	1/8	1/8	13	15	13	25
0607000016WNB	1/4	1/4	18	19	18	25

6080

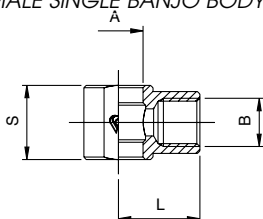
RACCORDO A T MASCHIO-FEMMINA-FEMMINA - MALE-FEMALE-FEMALE TEE FITTING



Codice Code	A	B	H	L	CH	Conf. Pack.
0608000012WNT	1/8	1/8	13	15	13	25
0608000016WNT	1/4	1/4	18	18.5	18	25

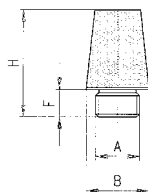
6090

ANELLO ORIENTABILE A L FEMMINA - FEMALE SINGLE BANJO BODY



Codice Code	B	A	L	S	Conf. Pack.
06090000102NB	1/8	10	16.5	15	25
06090000103NB	1/4	13	22	17	25
06090000104NB	3/8	16.7	26	20	25

7000

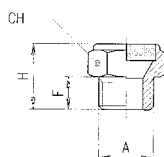
SILENZIATORE - SILENCER

dB = Livello di rumore in (dB) a 6 bar
 Noise level in (dB) at 6 bar

CARATTERISTICHE TECNICHE / TECHNICAL CHARACTERISTICS

Pressione massima / maximum pressure: 10 bar
Temperatura minima / minimum temperature: -10°C
Temperatura massima / maximum temperature: +80°C
Soglia di filtrazione / filtration threshold: 50 µm

Codice Code	A	F	H	CH	dB	Conf. Pack.
070000001	1/8	4.5	12.5	21	81	25
070000002	1/4	6	15	25	83	25
070000003	3/8	8.5	19	34.5	87	25
070000004	1/2	8	23	43	90	25
070000005	3/4	9	30	50	92 a 4 Bar	25
070000006	1"	11	37	60.5	92 a 4 Bar	10

7010

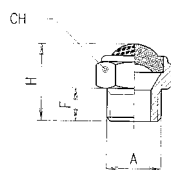
SILENZIATORE - SILENCER

dB = Livello di rumore in (dB) a 6 bar
 Noise level in (dB) at 6 bar

CARATTERISTICHE TECNICHE / TECHNICAL CHARACTERISTICS

Pressione massima / maximum pressure: 12 bar
Temperatura minima / minimum temperature: -10°C
Temperatura massima / maximum temperature: +80°C
Soglia di filtrazione / filtration threshold: 100 µm

Codice Code	A	F	H	CH	dB	Conf. Pack.
070100001	1/8	6	14	13	73	25
070100002	1/4	7	17	16	74	25
070100003	3/8	8	18	19	85	25
070100004	1/2	10	20	24	89	25
070100005	3/4	10	23	30	90	25

7020

SILENZIATORE - SILENCER

dB = Livello di rumore in (dB) a 6 bar
 Noise level in (dB) at 6 bar

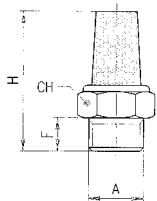
CARATTERISTICHE TECNICHE / Technical characteristics

Pressione massima / maximum pressure: 12 bar
Temperatura minima / minimum temperature: -10°C
Temperatura massima / maximum temperature: +80°C
Soglia di filtrazione / filtration threshold: 100 µm

Codice Code	A	F	H	CH	dB	Conf. Pack.
070200001	M5	4	8	8	-	25
070200002	1/8	6	15	13	74	25
070200003	1/4	7	18	16	72	25
070200004	3/8	8	20	19	88	25
070200005	1/2	10	22	24	90	25
070200006	3/4	10	26	30	90	25
070200007	1"	12	28	36	92	10

7030

SILENZIATORE - SILENCER



dB = Livello di rumore in (dB) a 6 bar
Noise level in (dB) at 6 bar

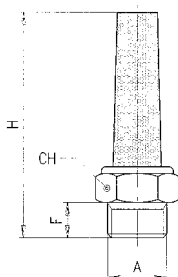
CARATTERISTICHE TECNICHE / TECHNICAL CHARACTERISTICS

Pressione massima / maximum pressure: **10 bar**
 Temperatura minima / minimum temperature: **-10°C**
 Temperatura massima / maximum temperature: **+80°C**
 Soglia di filtrazione / filtration threshold: **50 µm**

Codice Code	A	F	H	CH	dB	Conf. Pack.
0703000001	M5	4	17	8	-	25
0703000002	1/8	6	29	13	-	25
0703000003	1/4	7	32	16	-	25
0703000004	3/8	8	40	19	-	25
0703000005	1/2	9	45	24	-	25
0703000006	3/4	10	56	30	-	10
0703000007	1"	12	66	36	-	10

7040

SILENZIATORE - SILENCER



dB = Livello di rumore in (dB) a 6 bar
Noise level in (dB) at 6 bar

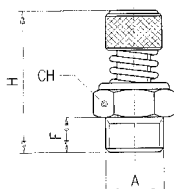
CARATTERISTICHE TECNICHE / TECHNICAL CHARACTERISTICS

Pressione massima / maximum pressure: **12 bar**
 Temperatura minima / minimum temperature: **-10°C**
 Temperatura massima / maximum temperature: **+80°C**
 Soglia di filtrazione / filtration threshold: **36 µm**

Codice Code	A	F	H	CH	dB	Conf. Pack.
0704000001	1/8	6	44	13	76	25
0704000002	1/4	7	50	16	75	25
0704000003	3/8	8	54	19	88	25
0704000004	1/2	9	67	24	89	10
0704000005	3/4	9	65	30	-	10

7050

SILENZIATORE - SILENCER



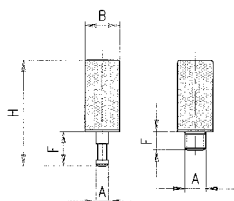
dB = Livello di rumore in (dB) a 6 bar
Noise level in (dB) at 6 bar

CARATTERISTICHE TECNICHE / TECHNICAL CHARACTERISTICS

Pressione massima / maximum pressure: **12 bar**
 Temperatura minima / minimum temperature: **-10°C**
 Temperatura massima / maximum temperature: **+80°C**
 Soglia di filtrazione / filtration threshold: **100 µm**

Codice Code	A	F	Hmin	Hmax	CH	dB	Conf. Pack.
0705000001	1/8	6	26	28	13	72	25
0705000002	1/4	8	30	32	15	73	25
0705000003	3/8	10	35	38	22	84	25
0705000004	1/2	11	37	40	22	88	25

7060

SILENZIATORE - SILENCER


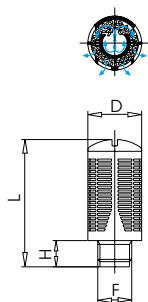
dB = Livello di rumore in (dB) a 6 bar
Noise level in (dB) at 6 bar

CARATTERISTICHE TECNICHE / TECHNICAL CHARACTERISTICS

Pressione massima / maximum pressure: **10 bar**
 Temperatura minima / minimum temperature: **-10°C**
 Temperatura massima / maximum temperature: **+80°C**
 Soglia di filtrazione / filtration threshold: **50 µm**

Codice Code	Misura/Size	A	F	B	H	dB	Conf. Pack.
070600002	4	3,5	8	8	25,5	-	25
070600003	6	5	10	8	26	-	25

7070

SILENZIATORE IN RESINA ACETALICA CON MATERIALE PLASTICO FONDOASSORBENTE
SILENCER MADE IN ACETALIC RESIN WITH PLASTIC SOUNDPROOFING MATERIAL


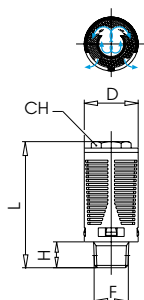
dB = Livello di rumore in (dB) a 6 bar
Noise level in (dB) at 6 bar

CARATTERISTICHE TECNICHE / TECHNICAL CHARACTERISTICS

Pressione massima / maximum pressure: **6 bar**
 Temperatura minima / minimum temperature: **-10°C**
 Temperatura massima / maximum temperature: **+50°C**

Codice Code	F	H	D	L	dB	Conf. Pack.
070700001	1/8	6	15	32,5	87	25
070700002	1/4	8	19,5	43	84	25
070700003	3/8	11	24,5	58	90	25
070700004	1/2	11	24,5	58	90	10
070700005	3/4	18	48	115	91	5
070700006	1"	18	48	115	90	5

7080

SILENZIATORE IN PA66 E FELTRO - SILENCER MADE IN PA66 WITH FELT


dB = Livello di rumore in (dB) a 6 bar
Noise level in (dB) at 6 bar

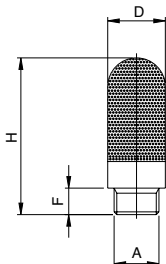
CARATTERISTICHE TECNICHE / TECHNICAL CHARACTERISTICS

Pressione massima / maximum pressure: **6 bar**
 Temperatura minima / minimum temperature: **-10°C**
 Temperatura massima / maximum temperature: **+70°C**

Codice Code	F	H	D	L	CH	dB	Conf. Pack.
070800001	1/8	6	16	34	2	87	25
070800002	1/4	8	19	44	12	90	25
070800003	3/8	10	24	56	17	92	25
070800004	1/2	10	24	56	17	92	10
070800005	3/4	18	48	115	-	-	5
070800006	1"	18	48	115	-	-	5

7100

SILENZIATORI IN POLIETILENE - POROUS POLYETHYLENE SILENCER



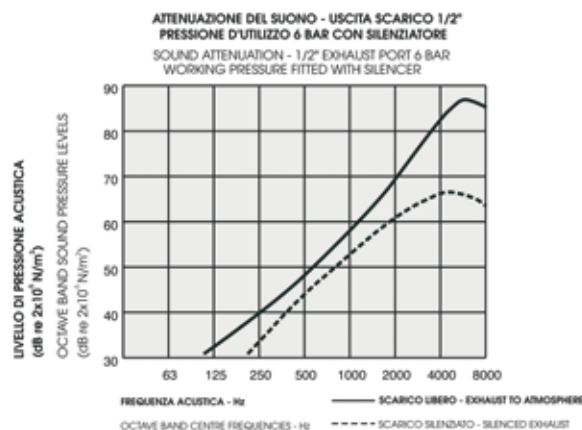
CARATTERISTICHE TECNICHE / TECHNICAL CHARACTERISTICS

Pressione massima / maximum pressure: **10 bar**
 Temperatura minima / minimum temperature: **-15°C**
 Temperatura massima / maximum temperature: **+100°C**
 Soglia di filtrazione / filtration threshold: **75 µm**

Codice Code	A	F	H	D	Conf. Pack.
071000001	M5	4	23	6.5	25
071000002	1/8	6	34	12.5	25
071000003	1/4	7	42.5	15.5	25
071000004	3/8	11.5	67.5	18.5	25
071000005	1/2	11	78	23.5	10
071000006	3/4	15.5	140	38.5	5
071000007	1"	19.5	160	49	5

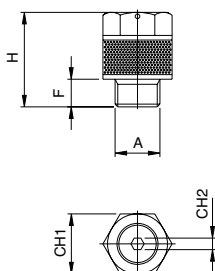
Il diagramma mostra la distribuzione della frequenza dell'energia del suono da un getto d'aria ad una pressione di circa 6 bar da un tipico scarico di uscita di una valvola pneumatica da 1/2". La zona critica fra 1 e 4 KHz, è la zona dove l'udito umano è più sensibile e dove gli effetti psicologici agli alti livelli di rumore sono più dannosi. Come si nota dal diagramma l'attenuazione del suono è di circa 20-25 dB ad una pressione di 6 bar.

In the diagram is shown the frequency distribution of the sound energy in an 6 bar air jet from a typical 1/2" control valve exhaust port. The critical region is that between 1 and 4 KHz, the range where psychological effects at high noise levels are most damaging. Sound reduction for this silencer is approx mately 20-25 dB at 6 bar working pressure.



7110

SILENZIATORI IN POLIETILENE CON REGOLAZIONE DI SCARICO - POROUS POLYETHYLENE RESTRICTOR SILENCER



CARATTERISTICHE TECNICHE / TECHNICAL CHARACTERISTIC

Pressione massima / maximum pressure: **10 bar**
 Temperatura minima / minimum temperature: **-15°C**
 Temperatura massima / maximum temperature: **+100°C**
 Soglia di filtrazione / filtration threshold: **75 µm**

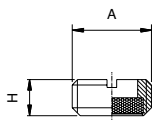
Codice Code	A	F	H	CH1	CH2	Conf. Pack.
071100001	M5	5	16	8	1.5	25
071100002	1/8	6	20.5	13	2.5	25
071100003	1/4	7	29	15	4	25
071100004	3/8	8	38	20	6	25
071100005	1/2	10	50	25	8	10

L'unione di un'accurata e facile regolazione con gli elementi dei silenziatori porosi in polietilene aumenta quelle che sono le prestazioni di questo articolo, le cui caratteristiche sono riportate nel grafico a fianco.

The combination of accurate and easy adjustment with the porous polyethylene silencing increase the performance of this article, which characteristics are shown in the following of gram.



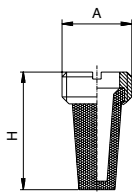
7120

SILENZIATORE A PASTIGLIA CON TAGLIO CACCIAVITE - PAD SILENCER WITH SLOT FOR SCREWDRIVER

CARATTERISTICHE TECNICHE / TECHNICAL CHARACTERISTICS

Pressione massima / maximum pressure: **10 bar**
 Temperature / temperature: **-10°C / +80°C**
 Soglia di filtrazione / filtration threshold: **120 µm**

Codice Code	A	H	Conf. Pack.
071200001	1/8	4	25
071200002	1/4	6	25
071200003	3/8	6	25
071200004	1/2	9	25
071200005	3/4	10	10
071200006	1"	10	10

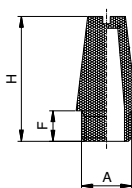
7130

SILENZIATORE A PASTIGLIA FILTRANTE CONICO TAGLIO CACCIAVITE - SILENCER WITH FILTERING PAD - (TAPER) WITH SLOT FOR SCREWDRIVER

CARATTERISTICHE TECNICHE / TECHNICAL CHARACTERISTICS

Pressione massima / maximum pressure: **10 bar**
 Temperature / temperature: **-10°C / +80°C**
 Soglia di filtrazione / filtration threshold: **50 µm**

Codice Code	A	H	Conf. Pack.
071300001	1/8	15	25
071300002	1/4	18	25
071300003	3/8	21	25
071300004	1/2	27	25
071300005	3/4	36	10
071300006	1"	46	10

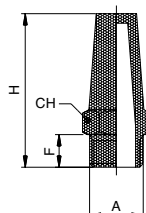
7140

SILENZIATORE INTEGRALE CON TAGLIO CACCIAVITE - INTEGRAL SILENCER WITH SLOT FOR SCREWDRIVER

CARATTERISTICHE TECNICHE / TECHNICAL CHARACTERISTICS

Pressione massima / maximum pressure: **10 bar**
 Temperature / temperature: **-10°C / +80°C**
 Soglia di filtrazione / filtration threshold: **50 µm**

Codice Code	A	H	F	Conf. Pack.
071400001	1/8	21	5.5	25
071400002	1/4	27	8.5	25
071400003	3/8	36	11	25
071400004	1/2	44	11	25
071400005	3/4	63	13	10
071400006	1"	75	15	10

7150

SILENZIATORE INTEGRALE CON CHIAVE ESAGONALE - INTEGRAL SILENCER WITH HEXAGONAL WRENCH

CARATTERISTICHE TECNICHE / TECHNICAL CHARACTERISTICS

Pressione massima / maximum pressure: **10 bar**
 Temperature / temperature: **-10°C / +80°C**
 Soglia di filtrazione / filtration threshold: **50 µm**

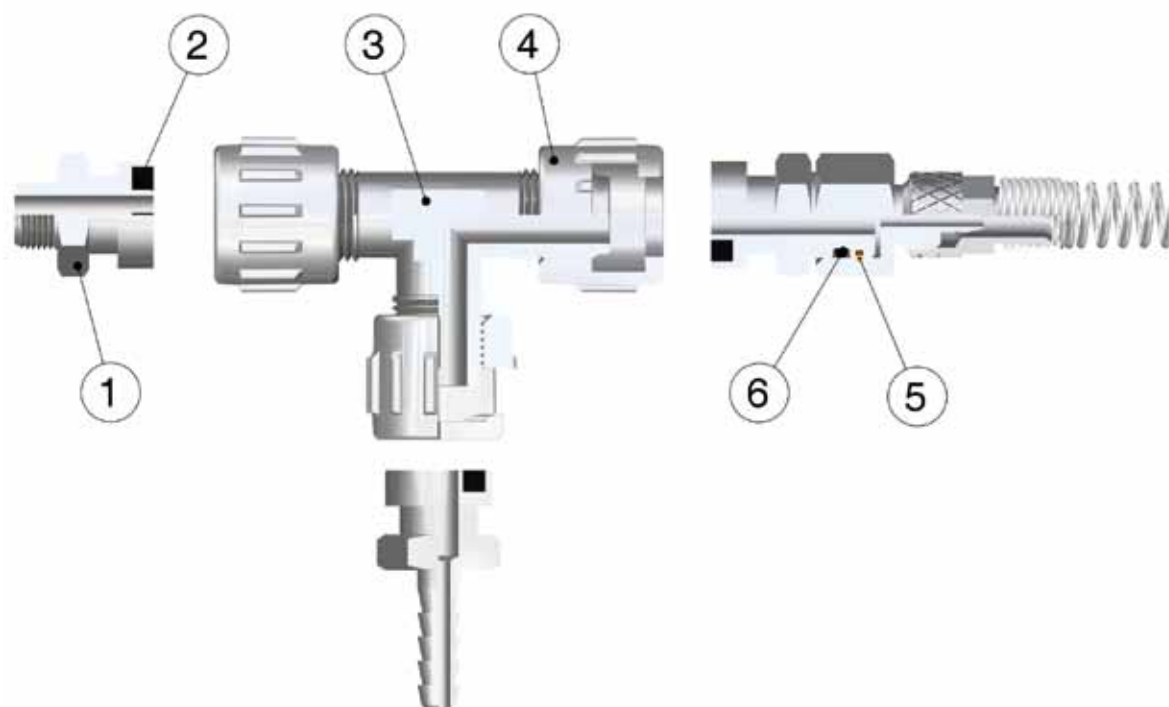
Codice Code	A	H	F	CH	Conf. Pack.
071500001	1/8	28	6	13	25
071500002	1/4	31.4	8	17	25
071500003	3/8	36	10	22	25
071500004	1/2	44	12	27	25
071500005	3/4	54	14	32	10
071500006	1"	66	16	41	10



Serie 1800

**RACCORDI E ACCESSORI
CON ATTACCO A BAIONETTA**
*FIXTURES AND FITTINGS
WITH BAYONET CONNECTION*

Caratteristiche Tecniche / Technical Characteristics



Materiali e Componenti / Component Parts and Materials

- 1 Baionetta in Ottone Nichelato
- 2 Guarnizione in NBR 90
- 3 Corpo in ottone nichelato
- 4 Dado capettato in zama nichelato
- 5 Seeger in bronzo
- 6 Guarnizione o-ring in NBR 70

- 1 Nickel-plated brass Bayonet
- 2 NBR 90 Seals
- 3 Nickel-plated brass Body
- 4 Nickel-plated zamac Milled Nut
- 5 Bronze Seeger
- 6 NBR 70 o-ring seal

Pressioni / Pressures

Pressioni e temperature sono determinate dal tipo di tubo impiegato, pertanto tali valori sono da definirsi in base alle caratteristiche del tubo stesso. I valori riguardano quindi esclusivamente i componenti da noi prodotti.

The working pressure and working temperatures depend on which type of tube is used, for this reason, the values must be determined in accordance with the tube's features.

Pressione minima / Minimum pressure: **-0.99 bar (-0.099 MPa)**

Pressione massima / Maximum pressure: **15 bar (1.5 MPa)**

Filettature / Threads

Gas cilindrica conforme ISO 228 Classe A / Parallel gas in conformity with ISO 228 Class A.

Metrica conforme ISO R/262 / Metric in conformity with ISO R/262.

Tubi di collegamento / Connection Tubes

Tubi in materiale plastico:

PA6, PA11, PA12, Polietilene, *Poliuretano, PVC intrecciato.

Poliuretano intrecciato per l'articolo 1810

*Per tubi in Poliuretano é consigliata una durezza di 98 shore.

Plastic tubes:

PA6, PA11, PA12, Polyethylene, *Polyurethane, Braided PVC.

Braided polyurethane for Art.1820

*For Polyurethane hoses it is required a minimum hardness of 98 shore.

Temperature / Temperatures

Temperatura minima / Minimum temperature: **-18 °C**

Temperatura massima / Maximum temperature: **+70 °C**

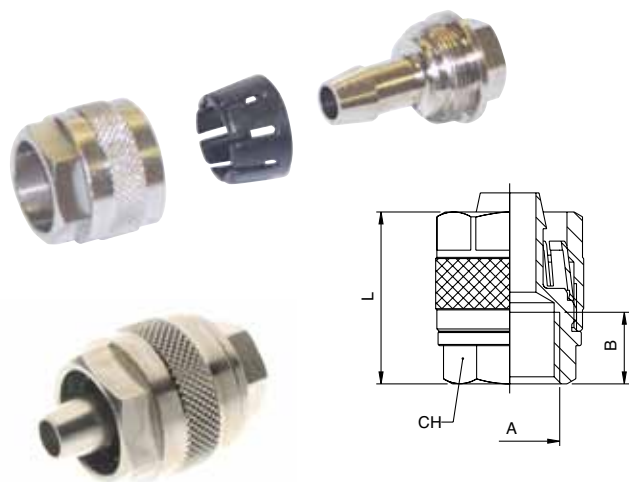
Fluidi compatibili / Fluids

Aria compressa, fluidi e liquidi a bassa pressione compatibili con il tipo di accoppiamento.

Compressed air, fluids and liquids at low pressure compatible with the connection.

1810

RACCORDI PER TUBI IN GOMMA - FITTING FOR RUBBER HOSE



Codice Code	Tubo Tube	A	B	L	CH	Conf. Pack.
018100003	14/6	1/4	11	30	16	25
018100005	17/8	1/4	11	31	16	25
018100006	19/10	1/4	11	31	17	25
018100007	23/13	1/2	17	36	24	25

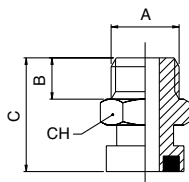
RACCORDI PER TUBI IN POLIURETANO INTRECCIATO
FITTINGS FOR BRAIDED POLYURETHANE HOSES



Codice Code	Tubo Tube	A	B	L	CH	Conf. Pack.
018100001	10/6	1/4	11	30	15	25
018100002	12/8	1/4	11	31	16	25
018100004	15/10	1/4	11	31	17	25

1830

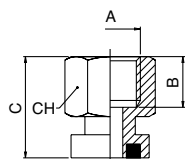
RACCORDO MASCHIO A BAIONETTA - MALE BAYONET



Codice Code	A	B	C	CH	Conf. Pack.
018300001	1/8	6	19,5	15	25
018300002	1/4	8	22	15	25
018300003	3/8	9	23	19	25

1831

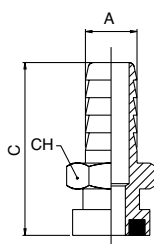
RACCORDO FEMMINA A BAIONETTA - FEMALE BAYONET



Codice Code	A	B	C	CH	Conf. Pack.
0183100001	1/8	8,5	19,5	15	25
0183100002	1/4	11	22	17	25
0183100003	3/8	11	22	20	25

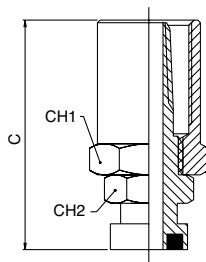
1832

RACCORDO BAIONETTA A RESCA - BAYONET WITH REST



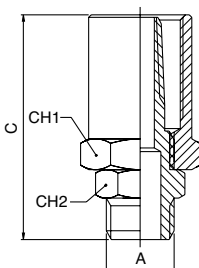
Codice Code	Tubo Tube	A	C	CH	Conf. Pack.
0183200001	int. 6	6	33,5	15	25
0183200002	int. 7	7	33,5	15	25
0183200003	int. 8	8	33,5	15	25
0183200004	int. 9	9	33,5	15	25
0183200005	int. 10	10	33,5	15	25
0183200006	int. 12	12	33,5	15	25

1833

RACCORDO BAIONETTA PORTAGOMMA - BAYONET FOR RUBBER HOSE


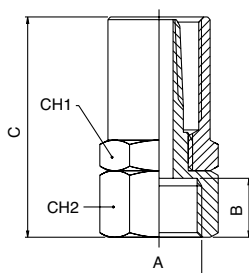
Codice Code	Tubo Tube	CH1	CH2	C	Conf. Pack.
0183300001	est. 14 - int. 6	17	15	44,5	25
0183300002	est. 17 - int. 8	20	15	44,5	25
0183300003	est. 19 - int. 10	22	15	44,5	25

1840

RACCORDO MASCHIO PORTAGOMMA - MALE FOR RUBBER HOSE


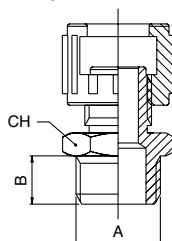
Codice Code	Tubo Tube	A	CH1	CH2	C	Conf. Pack.
0184000008	10/6	1/4	15	17	43	25
0184000009	12/8	1/4	15	17	43	25
0184000001	14/6	1/4	17	17	43	25
0184000010	15/10	1/4	18	17	43	25
0184000002	17/8	1/4	20	17	43	25
0184000003	17/8	3/8	20	19	44	25
0184000004	19/10	1/4	22	17	43	25
0184000005	19/10	3/8	22	19	44	25

1841

RACCORDO FEMMINA PORTAGOMMA - FEMALE FOR RUBBER HOSE


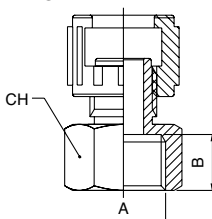
Codice Code	Tubo Tube	A	B	C	CH1	CH2	Conf. Pack.
0184100006	10/6	1/4	11	43	15	17	25
0184100007	12/8	1/4	11	43	15	17	25
0184100001	14/6	1/4	11	43	17	17	25
0184100008	15/10	1/4	11	43	18	17	25
0184100002	17/8	1/4	11	43	20	17	25
0184100003	17/8	3/8	11,5	43,5	20	20	25
0184100004	19/10	1/4	11	43	22	17	25
0184100005	19/10	3/8	11,5	43,5	22	20	25

1850

RACCORDO MASCHIO CON DADO CAPETTATO - MALE WITH MILLED NUT


Codice Code	A	B	CH	Conf. Pack.
0185000001	1/8	6	14	25
0185000002	1/4	8	15	25
0185000003	3/8	9	19	25

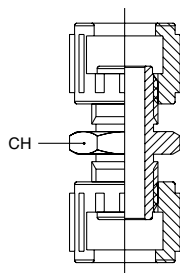
1851

RACCORDO FEMMINA CON DADO CAPETTATO - FEMALE WITH MILLED NUT


Codice Code	A	B	CH	Conf. Pack.
0185100001	1/4	11	17	25
0185100002	3/8	11	20	25

1852

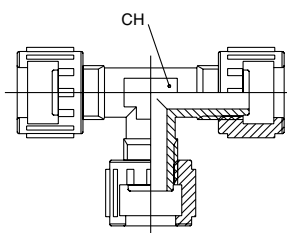
RACCORDO DOPPIO DADO CAPETTATO - DOUBLE MILLED NUT



Codice Code	A	CH	Conf. Pack.
0185200001	1/4	15	25

1853

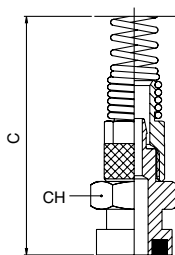
RACCORDO T CON DADI CAPETTATI - TEE WITH MILLED NUTS



Codice Code	A	CH	Conf. Pack.
0185300001	1/4	13	25

1855

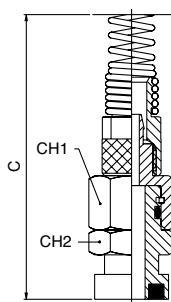
RACCORDO DIRITTO CON ATTACCO A BAIONETTA + DADO CON MOLLA
STRAIGHT FITTING WITH BAYONET CONNECTION + NUT AND SPRING



Codice Code	Tubo Tube	CH	C	Conf. Pack.
0185500001	6/4	15	110	25
0185500002	8/6	15	115	25
0185500003	10/8	15	123	25
0185500004	12/10	16	130	25

1860

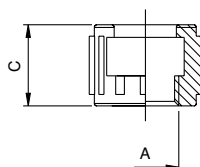
RACCORDO DIRITTO GIREVOLE CON ATTACCO A BAIONETTA + DADO CON MOLLA
SWIVEL STRAIGHT FITTING WITH BAYONET CONNECTION + NUT AND SPRING



Codice Code	Tubo Tube	CH1	CH2	C	Conf. Pack.
0186000001	6/4	15	15	120	25
0186000002	8/6	15	15	125	25
0186000003	10/8	15	15	134	25
0186000004	12/10	17	17	141	25

1808

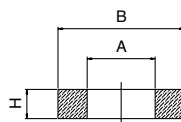
DADO CAPETTATO - MILLED NUT



Codice Code	A	C	Conf. Pack.
01808008003NT	1/4	16	25

1864

GUARNIZIONE DI TENUTA PER RACCORDI CON ATTACCO A BAIONETTA - TIGHTENING SEAL FOR FITTINGS WITH BAYONET CONNECTION

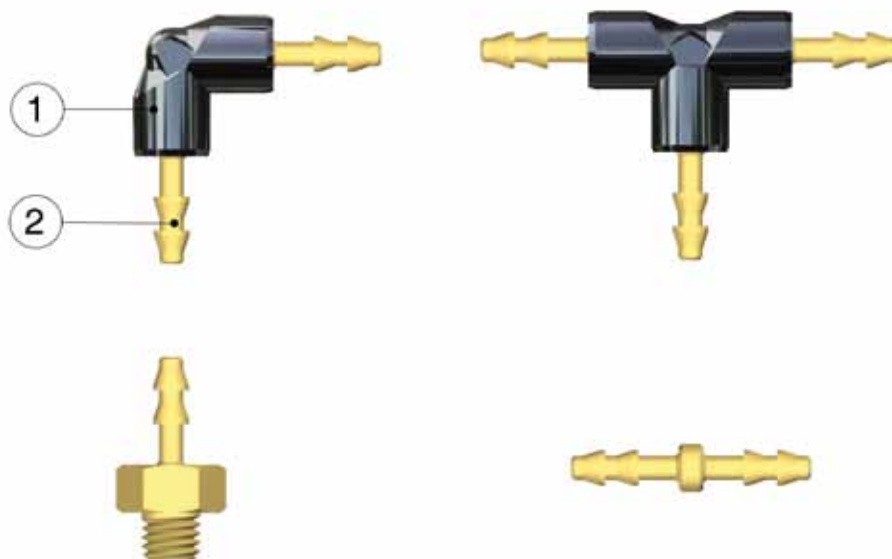


Codice Code	A	B	H	Conf. Pack.
018640024Z700	7	13	3	50



Serie **15000**

RACCORDI PORTAGOMMA PER TUBI IN MATERIALE PLASTICO
HOSE ADAPTERS FOR PLASTIC TUBES

Caratteristiche Tecniche / Technical Characteristics

Materiali e Componenti / Component Parts and Materials

- 1 Corpo in Tecnopolimero
- 2 Portagomma in ottone

- 1 Tecnopolymer Body
- 2 Brass Hose Adapter

Pressioni / Pressures

Pressione minima / Minimum pressure: **-0.99 bar (-0.099 MPa)**
 Pressione massima / Maximum pressure: **10 bar (1 MPa)**

Temperature / Temperatures

Temperatura minima / Minimum temperature: **-10 °C**
 Temperatura massima / Maximum temperature: **+80 °C**

Filettature / Threads

Metrica conforme ISO R/262 / Metric in conformity with ISO R/262.

Tubi di collegamento / Connection Tubes

Tubi in materiale plastico lineari:
 Poliuretano.

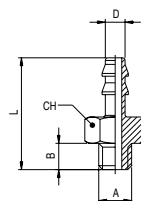
Flexible tubes in plastic:
 Polyurethane.

Fluidi compatibili / Fluids

Aria compressa / Compressed air.

15000

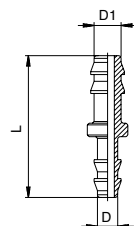
RACCORDO PORTAGOMMA DIRITTO MASCHIO - STRAIGHT HOSE MALE ADAPTOR



Codice Code	D	A	B	L	CH	Conf. Pack.
150000014V00	2	M5	4	17	8	50
150000016Q00	3	M5	4	17	8	50
150000010R00	4	M5	4	18	8	50
150000017S00	6	M5	4	18	8	50

15040

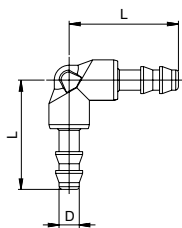
RACCORDO PORTAGOMMA INTERMEDIO DIRITTO - STRAIGHT BULKHEAD HOSE ADAPTOR



Codice Code	D	D1	L	Conf. Pack.
15040001W900	2	2	20	50
15040001FG00	3	2	20	50
15040001X000	3	3	20	50
15040001FH00	4	3	21	50
15040001X100	4	4	22	50
15040001FM00	6	4	22	50
15040001X400	6	6	22	50

15130

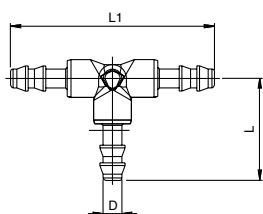
RACCORDO PORTAGOMMA INTERMEDIO A L - BULKHEAD ELBOW HOSE ADAPTOR



Codice Code	D	L	Conf. Pack.
151300001	2	17.5	50
151300002	3	17.5	50
151300003	4	22	50
151300004	6	22	50

15230

RACCORDO PORTAGOMMA INTERMEDIO A T - BULKHEAD TEE HOSE ADAPTOR



Codice Code	D	L	L1	Conf. Pack.
152300001	2	17.5	35	50
152300002	3	17.5	35	50
152300003	4	22	44	50
152300004	6	22	44	50

