



60000  
61000  
62000  
63000

# Serie INOX

**SERIE 60000** - RACCORDI IN ACCIAIO INOX AD INNESTO AUTOMATICO  
*STAINLESS STEEL PUSH-IN FITTINGS*

**SERIE 61000** - RACCORDI A CALZAMENTO IN ACCIAIO INOX  
*STAINLESS STEEL PUSH-ON FITTINGS*

**SERIE 62000** - ACCESSORI INOX  
*STAINLESS STEEL ACCESSORIES*

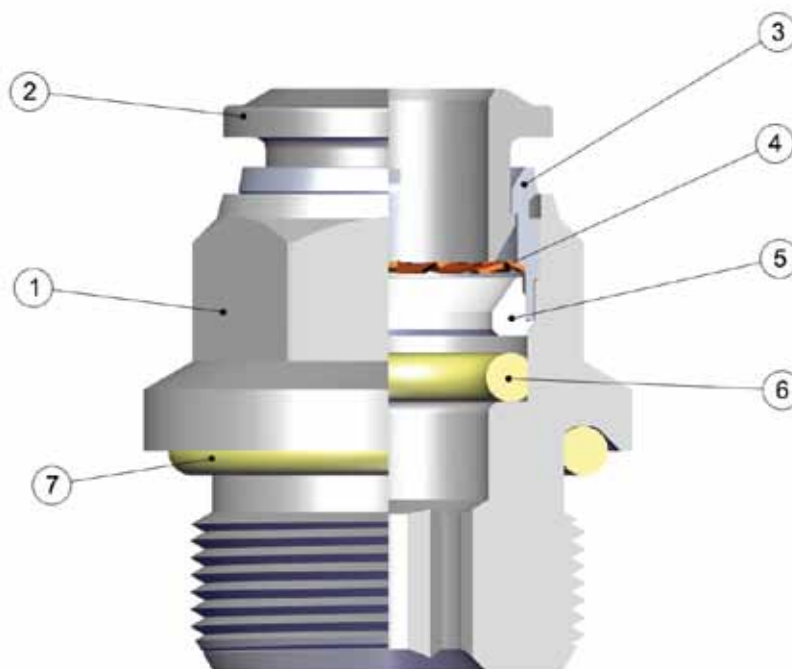
**SERIE 63000** - MULTIPRESA IN ACCIAIO INOX  
*STAINLESS STEEL MULTISOKET*

# RACCORDI IN ACCIAIO INOX AD INNESTO AUTOMATICO

## STAINLESS STEEL PUSH-IN FITTINGS

# SERIE 60000

### Caratteristiche Tecniche / Technical Characteristics



### Materiali e Componenti / Component Parts and Materials

- |   |                                   |
|---|-----------------------------------|
| 1 Corpo in Acciaio inox aisi 316L                 | 1 Aisi 316L Steel Body            |
| 2 Spintore sgancio tubo in Acciaio inox aisi 316L | 2 Aisi 316L Steel Collet          |
| 3 Capsula in Acciaio inox aisi 316L               | 3 Aisi 316L Steel Capsule         |
| 4 Pinza d'aggraffaggio in Acciaio inox aisi 316L  | 4 Aisi 316L Steel Clamping washer |
| 5 Anello di sicurezza in PTFE                     | 5 PTFE Safety ring                |
| 6 Guarnizione in FKM alimentare                   | 6 Food FKM Lip seal               |
| 7 Guarnizione filetto in FKM alimentare           | 7 Food FKM Thread packing         |

### Pressioni / Pressures

Pressione minima / Minimum pressure: **-0.99 bar** (-0.099 MPa)  
 Pressione massima / Maximum pressure: **15 bar** (1.5 MPa)

### Temperature / Temperatures

Temperatura minima / Minimum temperature: **-15 °C**  
 Temperatura massima / Maximum temperature: **+225 °C**

### Filettature / Threads

Gas conica conforme ISO 7.1, BS 21, DIN 2999 / Tapered gas in conformity with ISO 7.1, BS 21, DIN 2999.

Gas cilindrica conforme ISO 228 Classe A / Parallel gas in conformity with ISO 228 Class A.

Metrica conforme ISO R/262 / Metric in conformity with ISO R/262.

### Fluidi compatibili / Fluids

Aria compressa - Vuoto.

Fluidi per Industria alimentare e chimica compatibili con i componenti del raccordo.

Compressed air - Vacuum.

Fluid for food and chemical industry compatible with fitting components.

### Tubi di collegamento / Connection Tubes

Tubi in genere

PA6, PA11, PA12, Polietilene, \*Poliuretano, PTFE, FEP

\*Per tubi in Poliuretano é consigliata una durezza di 98 shore.

Tube in general.

PA6, PA11, PA12, Polyethylene, \*Polyurethane, PTFE, FEP.

\*For Polyurethane hoses it is required a minimum hardness of 98 shore.

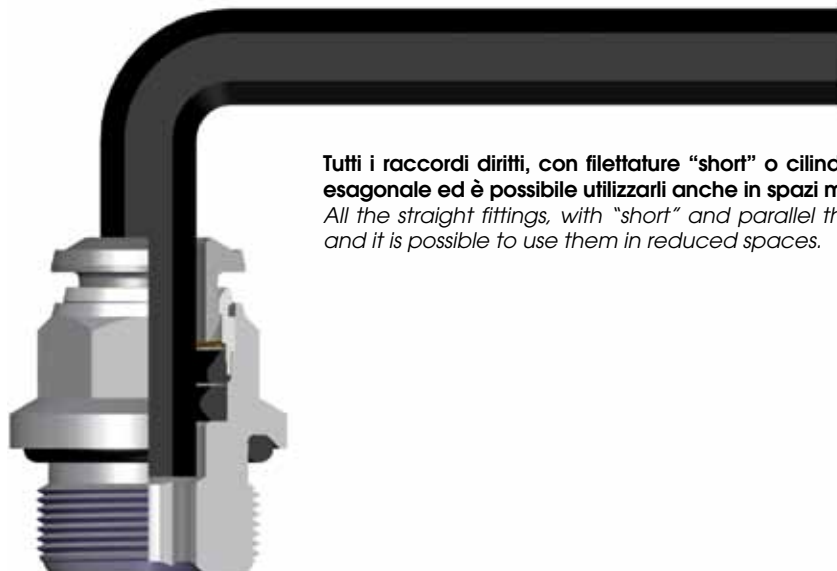
## Filettature / Threads



O-Ring di tenuta  
per filetti cilindrici  
*O-Ring of the  
parallel threads.*

Tutte le filettature di questa serie (anche la misura da M5) sono state dotate di elementi di tenuta che permettono l'immediato utilizzo dei raccordi riducendo notevolmente i tempi di installazione.

*All of threads from this range (also the M5), have been equipped with tightening parts which allow the direct assembly of the fittings, reducing the installation time.*



Tutti i raccordi diritti, con filettature "short" o cilindriche, possono essere montati anche con chiave esagonale ed è possibile utilizzarli anche in spazi molto ridotti.

*All the straight fittings, with "short" and parallel threads can be assembled also with Allen wrench and it is possible to use them in reduced spaces.*

## Aggraffaggio Pinza / Clamping washer

La pinza in acciaio inox garantisce il perfetto aggraffaggio di tubi di qualsiasi materiale senza danneggiarne la superficie.

*The washer is made in stainless steel ensures the perfect tube clamping with every kinds of materials without damage the surface.*

Il collegamento tra tubo e raccordo assicura una tenuta totale anche in condizioni di urti e vibrazioni.

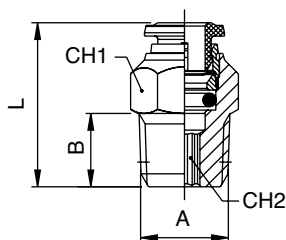
*The connection between the tube and the fitting ensure a total tightness even in severe conditions such as impact and vibrations.*

La particolare geometria della guarnizione permette inoltre l'utilizzo dei raccordi anche con il vuoto.

*The particular geometric shape of the seal ensure the perfect tightness even with vacuum.*

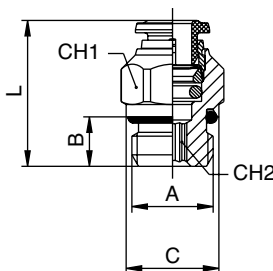


# 60000

**RACCORDO DIRITTO MASCHIO CONICO - STRAIGHT MALE ADAPTOR (TAPER)**


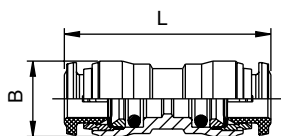
Codice Code	Tubo Tube	A	B	L	CH1	CH2	Conf. Pack.
600000001	4	1/8	7.5	19	10	3	10
600000002	4	1/4	11	23	14	3	10
600000003	6	1/8	7.5	22.5	13	4	10
600000004	6	1/4	11	24.5	14	4	10
600000005	8	1/8	7.5	25.5	14	5	10
600000006	8	1/4	11	25	14	6	10
600000007	10	1/4	11	30.5	17	7	10
600000008	10	3/8	11.5	28	17	8	10
600000009	12	3/8	11.5	33.5	21	9	10
600000010	12	1/2	14	32	22	10	10

# 60020

**RACCORDO DIRITTO MASCHIO CILINDRICO - STRAIGHT MALE ADAPTOR (PARALLEL)**


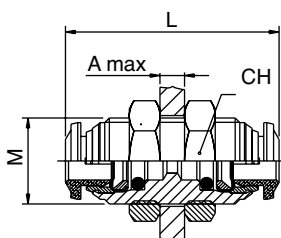
Codice Code	Tubo Tube	A	B	C	L	CH1	CH2	Conf. Pack.
600200011	4	M5	4	8	20	10	2	10
600200001	4	1/8	6	13	19.5	10	3	10
600200002	4	1/4	8	15	19.5	15	3	10
600200003	6	1/8	6	13	23.5	13	4	10
600200004	6	1/4	8	15	23.5	15	4	10
600200005	8	1/8	6	13	25.5	14	5	10
600200006	8	1/4	8	15	23.5	15	6	10
600200007	10	1/4	8	16	30	17	8	10
600200008	10	3/8	9	20	27	17	8	10
600200009	12	3/8	9	21	34	21	8	10
600200010	12	1/2	10	25	31	22	10	10

# 60040

**RACCORDO DIRITTO INTERMEDIO - STRAIGHT CONNECTOR**


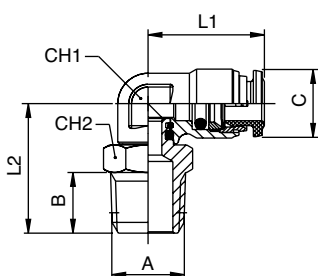
Codice Code	Tubo Tube	L	B	Conf. Pack.
600400001	4	31	10.5	10
600400002	6	35	12.5	10
600400003	8	36.5	14.5	10
600400004	10	42	17.5	10
600400005	12	48	20.5	10

# 60050

**RACCORDO DIRITTO INTERMEDIO DI ATTRAVERSAMENTO - BULKHEAD CONNECTOR**


Codice Code	Tubo Tube	M	L	CH	A max	Conf. Pack.
600500001	4	M12x1	31	17	7	10
600500002	6	M14x1	35	17	9.5	10
600500003	8	M16x1	37	19	10.5	10
600500004	10	M20x1	42	24	12.5	10
600500005	12	M22x1	48	26	16.5	10

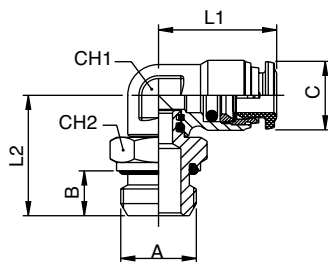
# 60110

**RACCORDO A L ORIENTABILE MASCHIO CONICO - SWIVEL ELBOW MALE ADAPTOR (TAPER)**


Codice Code	Tubo Tube	A	B	C	L1	L2	CH1	CH2	Conf. Pack.
601100001	4	1/8	7.5	10	18	17.5	9	11	10
601100002	4	1/4	11	10	18	21.5	9	14	10
601100003	6	1/8	7.5	12.5	21	19.5	11	11	10
601100004	6	1/4	11	12.5	21	23.5	11	14	10
601100005	8	1/8	7.5	14.5	22.5	20	12	11	10
601100006	8	1/4	11	14.5	22.5	24	12	14	10
601100007	10	1/4	11	17.5	26	25.5	16	17	10
601100008	10	3/8	11.5	17.5	26	27	16	17	10
601100009	10	1/2	14	17.5	26	30.5	16	22	10
601100010	12	3/8	11.5	20.5	30.5	30.5	19	18	10
601100011	12	1/2	14	20.5	30.5	33	19	22	10

# 60115

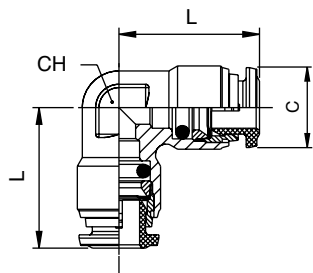
RACCORDO A L ORIENTABILE MASCHIO CILINDRICO - SWIVEL ELBOW MALE ADAPTOR (PARALLEL)



Codice Code	Tubo Tube	A	B	L	CH1	CH2	Conf. Pack.		
6011500012	4	M5	4	10	18	15	9	8	10
6011500001	4	1/8	6	10	18	17	9	13	10
6011500002	4	1/4	8	10	18	19.5	9	15	10
6011500003	6	1/8	6	12.5	21	19	11	13	10
6011500004	6	1/4	8	12.5	21	21.5	11	15	10
6011500005	8	1/8	6	14.5	22.5	19.5	12	13	10
6011500006	8	1/4	8	14.5	22.5	21.5	12	15	10
6011500007	10	1/4	8	17.5	26	23	16	15	10
6011500008	10	3/8	9	17.5	26	26.5	16	21	10
6011500009	10	1/2	10	17.5	26	29	16	22	10
6011500010	12	3/8	9	20.5	30.5	29	19	21	10
6011500011	12	1/2	10	20.5	30.5	31.5	19	22	10

# 60130

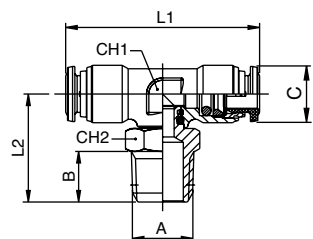
RACCORDO A L INTERMEDIO - ELBOW CONNECTOR



Codice Code	Tubo Tube	C	L	CH	Conf. Pack.
6013000001	4	10	18	9	10
6013000002	6	12.5	21	11	10
6013000003	8	14.5	22.5	12	10
6013000004	10	17.5	26	16	10
6013000005	12	20.5	30.5	19	10

# 60210

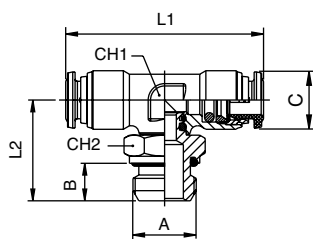
RACCORDO A T ORIENTABILE MASCHIO CONICO - SWIVEL TEE MALE ADAPTOR (TAPER)-CENTRE LEG



Codice Code	Tubo Tube	A	B	C	L1	L2	CH1	CH2	Conf. Pack.
6021000001	4	1/8	7.5	10	36	18.5	9	11	10
6021000002	4	1/4	11	10	36	22.5	9	14	10
6021000003	6	1/8	7.5	12.5	42	19.5	11	11	10
6021000004	6	1/4	11	12.5	42	23.5	11	14	10
6021000005	8	1/8	7.5	14.5	45	20.5	12	11	10
6021000006	8	1/4	11	14.5	45	24.5	12	14	10
6021000007	10	1/4	11	17.5	52	26	16	14	10
6021000008	10	3/8	11.5	17.5	52	27.5	16	17	10
6021000009	10	1/2	14	17.5	52	31	16	22	10
6021000010	12	3/8	11.5	20.5	61	30.5	19	18	10
6021000011	12	1/2	14	20.5	61	33	19	22	10

# 60215

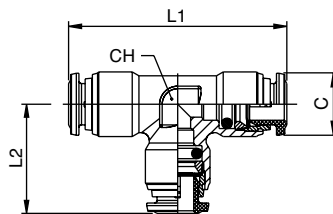
RACCORDO A T ORIENTABILE MASCHIO CILINDRICO - SWIVEL TEE MALE ADAPTOR (PARALLEL)-CENTRE LEG



Codice Code	Tubo Tube	A	B	C	L1	L2	CH1	CH2	Conf. Pack.
6021500012	4	M5	4	10	36	15	9	8	10
6021500001	4	1/8	6	10	36	18	9	13	10
6021500002	4	1/4	8	10	36	20.5	9	15	10
6021500003	6	1/8	6	12.5	42	19	11	13	10
6021500004	6	1/4	8	12.5	42	21.5	11	15	10
6021500005	8	1/8	6	14.5	45	20	12	13	10
6021500006	8	1/4	8	14.5	45	22	12	15	10
6021500007	10	1/4	8	17.5	52	23.5	16	15	10
6021500008	10	3/8	9	17.5	52	27	16	21	10
6021500009	10	1/2	10	17.5	52	29.5	16	22	10
6021500010	12	3/8	9	20.5	61	29	19	21	10
6021500011	12	1/2	10	20.5	61	31.5	19	22	10

# 60230

RACCORDO A T INTERMEDIO - TEE CONNECTOR

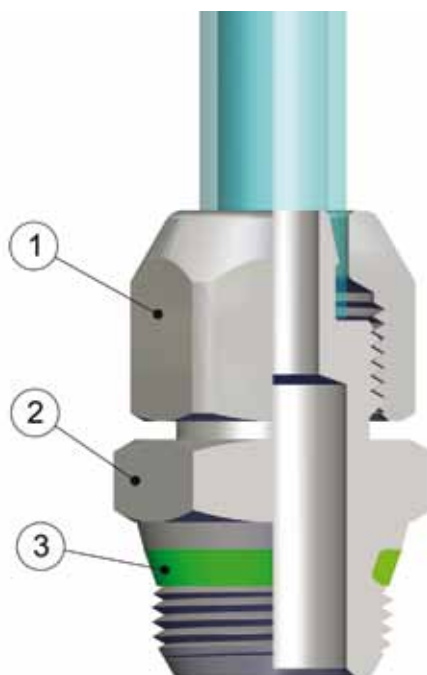


Codice Code	Tubo Tube	C	L1	L2	CH	Conf. Pack.
6023000001	4	10	36	18	9	10
6023000002	6	12.5	42	21	11	10
6023000003	8	14.5	45	22.5	12	10
6023000004	10	17.5	52	26	16	10
6023000005	12	20.5	61	30.5	19	10

## RACCORDI A CALZAMENTO IN ACCIAIO INOX STAINLESS STEEL PUSH-ON FITTINGS

# SERIE 61000

### Caratteristiche Tecniche / Technical Characteristics



### Materiali e Componenti / Component Parts and Materials

- |                                   |                        |
|-----------------------------------|------------------------|
| 1 Dado in Acciaio inox aisi 316L  | 1 Aisi 316L Steel Nut  |
| 2 Corpo in Acciaio inox aisi 316L | 2 Aisi 316L Steel Body |
| 3 Guarnizione in FKM alimentare   | 3 Food FKM seal        |

### Pressioni / Pressures

Pressioni e temperature sono determinate dal tipo di tubo impiegato, pertanto tali valori sono da definirsi in base alle caratteristiche del tubo stesso.

*The working pressures and working temperatures depend on which type of tube used, for this reason, the values must be determined in accordance with the tube's features.*

### Pressioni di esercizio / Working Pressures

Pressione minima / Minimum pressure: **-0.99 bar** (-0.099 MPa)  
Pressione massima / Maximum pressure: **15 bar** (1.5 MPa)

### Temperature / Temperatures

Temperatura minima / Minimum temperature: **-15 °C**  
Temperatura massima / Maximum temperature: **+225 °C**

### Filettature / Threads

Gas conica conforme ISO 7.1, BS 21, DIN 2999 / Tapered gas in conformity with ISO 7.1, BS 21, DIN 2999.

Gas cilindrica conforme ISO 228 Classe A / Parallel gas in conformity with ISO 228 Class A.

Gas conica "short" / "Short" tapered thread.

### Tubi di collegamento / Connection Tubes

Tubi in genere  
PA6, PA11, PA12, Polietilene, Poliuretano, PTFE, FEP.

*Tube in general.*  
PA6, PA11, PA12, Polyethylene, Polyurethane, PTFE, FEP.

### Fluidi compatibili / Fluids

Aria compressa - Vuoto - Acqua.  
Fluidi per Industria alimentare e chimica compatibili con i componenti del raccordo.  
Compressed air - Vacuum - Water.  
Fluid for food and chemical industry compatible with fitting components.

## Filettature / Threads

La filettatura conica "short" è progettata per soddisfare le seguenti caratteristiche:

- ridurre la lunghezza d'ingombro
- ridurre la chiave rispetto ad alcuni raccordi con filettature cilindriche
- consentire l'accoppiamento con diversi standard di filettature femmina sia coniche che cilindriche

The "short" taper thread has been designed to offer the following advantages to the users:

- reduced overall length;
- smaller hex dimensions compared to the parallel threads;
- to allow the assembly with different female threads both taper as well as parallel;



NPT  
NPTF

**Conica**  
Tapered



ISO 7  
BSPP

**Cilindrica**  
Parallel



ISO 7  
BSPT  
PT

**Conica**  
Tapered



ISO 228  
BSP  
PF

**Cilindrica**  
Parallel

consentire una completa tenuta anche su superfici non perfettamente piane, concave, convesse o inclinate, con diversi smussi o raggi.

To ensure the right tightening also with surfaces not perfectly flat, without spot-facing, concave convex and with different kinds of chamfers or radius.



**Inclinate**  
Inclined



**Concave**  
Concave



**Convesso**  
Convex

## Coppia di serraggio / Torque specifications

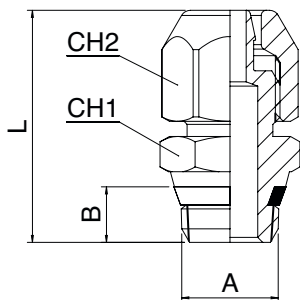


**COPPIE DI SERRAGGIO PER FILETTATURE MASCHIO "SHORT"**  
TORQUE TO MALE THREADS "SHORT"

MISURA MEASURE	COPPIA MINIMA CONSIGLIATA Nm RECOMMENDED MINIMUM TORQUE Nm	COPPIA MASSIMA CONSIGLIATA Nm RECOMMENDED MAX TORQUE Nm
1/8	5	7
1/4	5	7
3/8	5	7
1/2	5	7

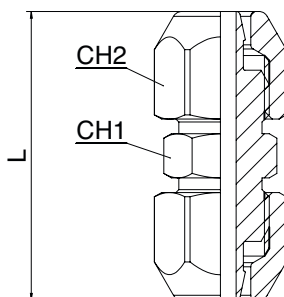
I VALORI DI ROTTURA POSSONO VARIARE IN BASE ALL'ARTICOLO  
BREAKING VALUES MAY VARY ACCORDING TO THE ITEM

# 61005

**RACCORDO DIRITTO MASCHIO SHORT - STRAIGHT MALE ADAPTOR (SHORT)**


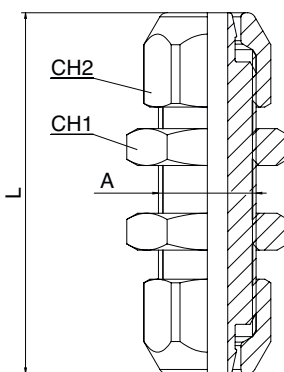
Codice Code	Tubo Tube	A	B	L	CH1	CH2	Conf. Pack.
610050003	6/4	1/8	5.5	23	12	12	10
610050004	6/4	1/4	7	25.5	15	12	10
610050006	8/6	1/8	5.5	23	12	14	10
610050007	8/6	1/4	7	25.5	15	14	10
610050011	10/8	1/4	7	27.5	15	16	10
610050012	10/8	3/8	7.5	29	17	16	10

# 61040

**RACCORDO DIRITTO INTERMEDIO - STRAIGHT CONNECTOR**


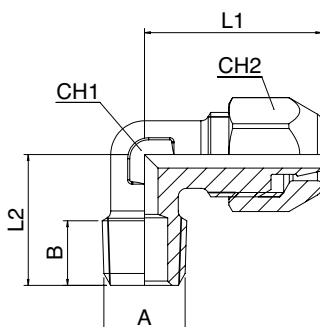
Codice Code	Tubo Tube	L	CH1	CH2	Conf. Pack.
610400004	6/4	29.5	10	12	10
610400006	8/6	30	12	14	10
610400009	10/8	34.5	14	16	10

# 61050

**RACCORDO DIRITTO INTERMEDIO DI ATTRAVERSAMENTO - BULKHEAD CONNECTOR**


Codice Code	Tubo Tube	A	L	CH1	CH2	Conf. Pack.
610500004	6/4	M10x1	44	14	12	10
610500006	8/6	M12x1	44	17	14	10

# 61100

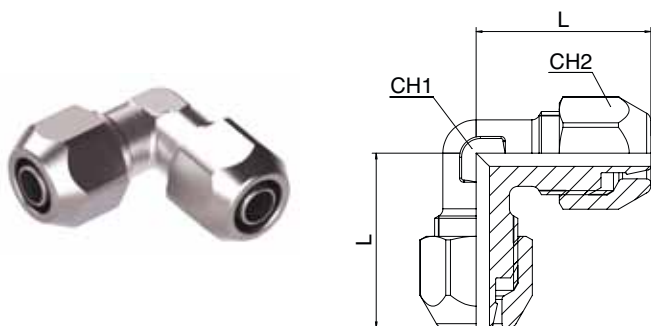
**RACCORDO A L MASCHIO CONICO - SWIVEL ELBOW MALE ADAPTOR (TAPER)**


Codice Code	Tubo Tube	A	B	L1	L2	CH1	CH2	Conf. Pack.
611000003	6/4	1/8	7.5	21	15.5	8	12	10
611000004	6/4	1/4	11	21	19.5	8	12	10
611000006	8/6	1/8	7.5	22.5	17	10	14	10
611000007	8/6	1/4	11	22.5	21	10	14	10
611000011	10/8	1/4	11	25.5	21.5	12	16	10
611000012	10/8	3/8	11.5	25.5	22	12	16	10



# 61130

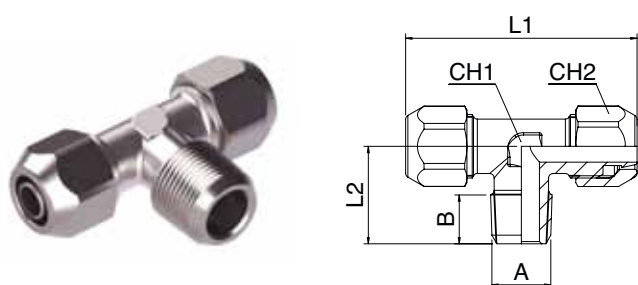
RACCORDO A L INTERMEDIO - ELBOW CONNECTOR



Codice Code	Tubo Tube	L	CH1	CH2	Conf. Pack.
6113000003	6/4	21	8	12	10
6113000005	8/6	22.5	10	14	10
6113000006	10/8	25.5	12	16	10

# 61200

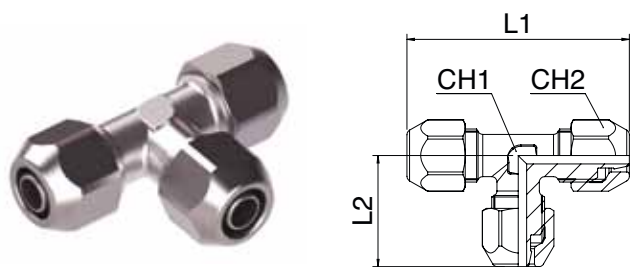
RACCORDO A T MASCHIO CONICO - SWIVEL TEE MALE ADAPTOR (TAPER)-CENTRE LEG



Codice Code	Tubo Tube	A	B	L1	L2	CH1	CH2	Conf. Pack.
6120000003	6/4	1/8	7.5	42	15.5	8	12	10
6120000004	6/4	1/4	11	42	19.5	8	12	10
6120000005	8/6	1/8	7.5	45	17	10	14	10
6120000006	8/6	1/4	11	45	21	10	14	10
6120000008	10/8	1/4	11	51	21.5	12	16	10
6120000009	10/8	3/8	11.5	51	22	12	16	10

# 61230

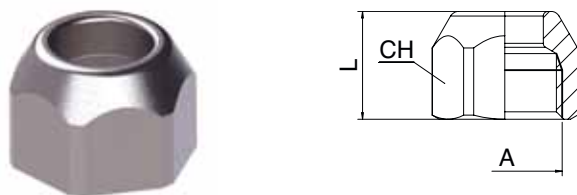
RACCORDO A T INTERMEDIO - TEE CONNECTOR



Codice Code	Tubo Tube	L1	L2	CH1	CH2	Conf. Pack.
6123000003	6/4	42	21	8	12	10
6123000005	8/6	45	22.5	10	14	10
6123000008	10/8	51	25.5	12	16	10

# 61700

DADO - NUT



Codice Code	Tubo Tube	A	L	CH	Conf. Pack.
6170000440X00	6/4	M10x1	11	12	10
6170000444X00	8/6	M12x1	11.5	14	10
6170000445X00	10/8	M14x1	13.5	16	10

## ACCESSORI IN ACCIAIO INOX STAINLESS STEEL ACCESSORIES

## SERIE 62000

### Caratteristiche Tecniche Accessori / Accessories Technical Characteristics

#### Pressioni / Pressures

Pressione minima / Minimum pressure: **-0.99 bar (-0.099 MPa)**

Pressione massima / Maximum pressure: **140 bar (14 MPa)**

Queste Pressioni valgono per gli accessori senza o-ring;  
Per gli accessori con o-ring consultare i valori di pressione  
direttamente sulla tabella dell'articolo.

These pressures apply to the equipment without o-ring;  
For accessories with o-ring see pressure values directly from  
the table the article.

#### Temperature / Temperatures

Temperatura minima / Minimum temperature: **-110 °C**

Temperatura massima / Maximum temperature: **+300 °C**

Queste temperature valgono per gli accessori senza o-ring;  
Per gli accessori con o-ring consultare i valori di temperatura  
direttamente sulla tabella dell'articolo.

These temperatures apply to the equipment without o-ring;  
For accessories with o-ring see temperature values directly  
from the table the article.

#### Filettature / Threads

Gas conica conforme ISO 7.1, BS 21, DIN 2999 / Tapered gas in conformity with ISO 7.1, BS 21, DIN 2999.

Gas cilindrica conforme ISO 228 Classe A / Parallel gas in conformity with ISO 228 Class A.

Metrica conforme ISO R/262 / Metric in conformity with ISO R/262.

#### Tubi di collegamento / Connection Tubes

Tubi e raccorderia in genere

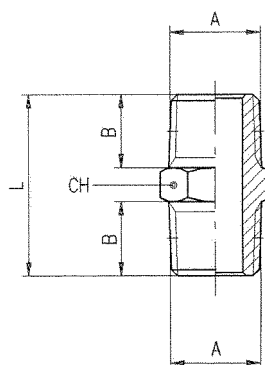
Tube and fittings in general.

#### Fluidi / Fluids

Fluidi per Industria alimentare e chimica compatibili con i  
componenti del raccordo / Fluid for alimentar and chemical  
industry compatible with fitting components.

## 62000

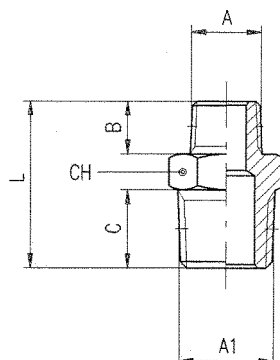
NIPPLLO CONICO - NIPPLE (TAPER)



Codice Code	A	B	L	CH	Conf. Pack.
620000440200	1/8	7.5	19.5	11	10
620000440300	1/4	11	27	14	10
620000440400	3/8	11.5	28	17	10
620000440500	1/2	14	33.5	22	10
620000440700	3/4	16.5	40	27	10

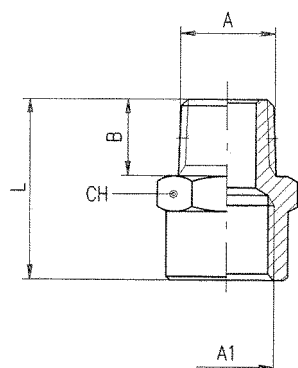
## 62020

NIPPLLO DI RIDUZIONE CONICO - REDUCING NIPPLE (TAPER)



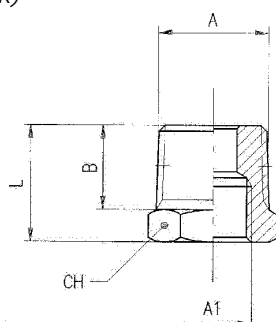
Codice Code	A	A1	B	C	L	CH	Conf. Pack.
620200044AT00	1/8	1/4	7.5	11	23.5	14	10
6202000443W00	1/8	3/8	7.5	11.5	24	17	10
6202000447W00	1/4	3/8	11	11.5	27.5	17	10
6202000448W00	1/4	1/2	11	14	30.5	22	10
620200044AC00	3/8	1/2	11.5	14	31	22	10
620200044AH00	1/2	3/4	14	16.5	37.5	27	10

# 62040

**RIDUZIONE CONICA - REDUCER (TAPER)**


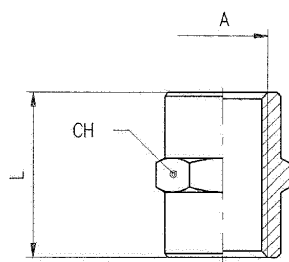
Codice Code	A	A1	B	L	CH	Conf. Pack.
620400044AT00	1/8	1/4	7.5	22	17	10
6204000447W00	1/4	3/8	11	27	22	10
6204000448W00	1/4	1/2	11	30	24	10
620400044AC00	3/8	1/2	11.5	30.5	24	10
620400044AH00	1/2	3/4	14	35	32	10

# 62080

**RIDUZIONE CONICA - REDUCER (TAPER)**


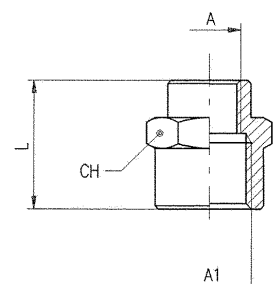
Codice Code	A	A1	B	L	CH	Conf. Pack.
6208000445W00	1/4	1/8	11	16	14	10
6208000449W00	3/8	1/8	11.5	16.5	17	10
620800044AA00	3/8	1/4	11.5	16.5	17	10
620800044AE00	1/2	1/4	14	19.5	22	10
620800044AF00	1/2	3/8	14	19.5	22	10
620800044AM00	3/4	1/2	16.5	23.5	27	10

# 62300

**MANICOTTO - SLEEVE**


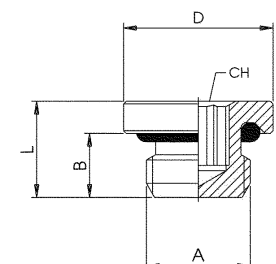
Codice Code	A	L	CH	Conf. Pack.
6230000440200	1/8	15	14	10
6230000440300	1/4	22	17	10
6230000440400	3/8	24	22	10
6230000440500	1/2	30	27	10
6230000440700	3/4	32	32	10

# 62310

**MANICOTTO DI RIDUZIONE - REDUCING SLEEVE**


Codice Code	A	A1	L	CH	Conf. Pack.
623100044AT00	1/8	1/4	19	17	10
6231000447W00	1/4	3/8	23	22	10
623100044AC00	3/8	1/2	27.5	24	10
623100044AH00	1/2	3/4	30	30	10

# 62315

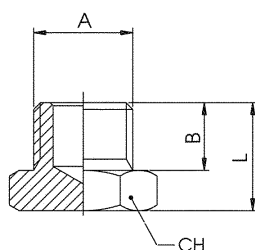
**TAPPO MASCHIO CILINDRICO ESAGONO INCASSATO - MALE PLUG (PARALLEL) WITH EXAGON EMBEDDED**


Codice Code	A	B	L	D	CH	Conf. Pack.
6231500001	1/8	6	8.5	14	5	10
6231500002	1/4	8	11	18	6	10
6231500003	3/8	9	12.5	20	8	10
6231500004	1/2	10	13.5	25	10	10

Temperatura minima / Minimum temperature: **-15 °C**  
 Temperatura massima / Maximum temperature: **+225 °C**  
 Pressione minima / Minimum pressure: **-0.99 bar (-0.099 MPa)**  
 Pressione massima / Maximum pressure: **+15 bar (1.5 MPa)**

## 62320

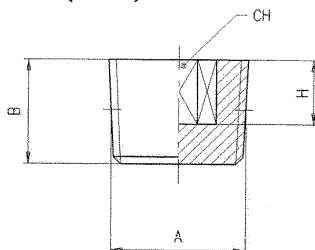
TAPPO MASCHIO CILINDRICO - MALE PLUG (PARALLEL)



Codice Code	A	B	L	CH	Conf. Pack.
6232000440200	1/8	6.5	10	14	10
6232000440300	1/4	9	13	17	10
6232000440400	3/8	9.5	13.5	19	10
6232000440500	1/2	10	14.5	24	10
6232000440700	3/4	11	16	30	10

## 62325

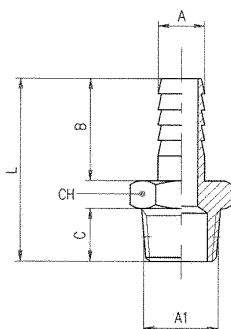
TAPPO MASCHIO CONICO - MALE PLUG (TAPER)



Codice Code	A	B	H	CH	Conf. Pack.
6232500440200	1/8	7.5	5	5	10
6232500440300	1/4	10	7	6	10
6232500440400	3/8	11	7	8	10
6232500440500	1/2	13	8	10	10

## 62340

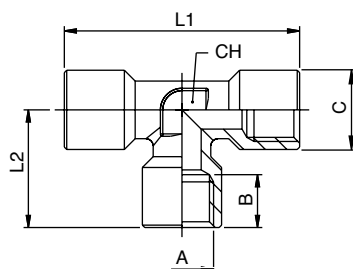
PORTAGOMMA MASCHIO CONICO - MALE HOSE ADAPTER (TAPER)



Codice Code	A	A1	B	C	L	CH	Conf. Pack.
623400044BS00	6	1/8	19.5	7.5	32	11	10
623400044BZ00	7	1/8	19.5	7.5	32	11	10
623400044BX00	7	1/4	19.5	11	35.5	14	10
623400044BJ00	8	1/4	19.5	11	35.5	14	10
623400044CB00	9	1/4	19.5	11	35.5	14	10
623400044CC00	9	3/8	19.5	11.5	36	17	10
623400044CF00	10	1/4	19.5	11	35.5	14	10
623400044CG00	10	3/8	19.5	11.5	36	17	10
623400044CH00	10	1/2	19.5	14	39	22	10
623400044CI00	12	1/4	19.5	11	35.5	14	10
623400044CL00	12	3/8	19.5	11.5	36	17	10
623400044CM00	12	1/2	19.5	14	39	22	10
623400044CN00	14	3/8	19.5	11.5	36	17	10
623400044DB00	14	1/2	19.5	14	39	22	10
623400044CR00	16	1/2	19.5	14	39	22	10
623400044CZ00	18	1/2	19.5	14	39	22	10
623400044CX00	18	3/4	19.5	16.5	43.5	27	10
623400044CJ00	20	1/2	19.5	14	39	22	10
623400044DH00	20	3/4	19.5	13.5	40	27	10

## 62400

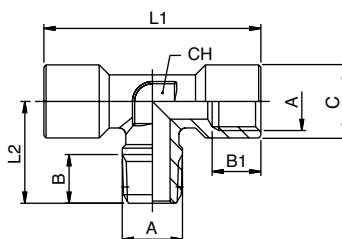
RACCORDO A T FEMMINA - FEMALE TEE



Codice Code	A	B	C	L1	L2	CH	Conf. Pack.
6240000440200	1/8	8.5	18.5	37	18.5	12	10
6240000440300	1/4	11	24.5	49	24.5	12	10
6240000440400	3/8	12	27	54	27	15	10
6240000440500	1/2	15	32	64	32	20	10

## 62440

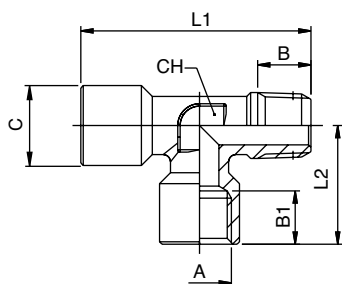
RACCORDO A T MASCHIO CENTRALE - CENTRE LEG MALE TEE



Codice Code	A	B	B1	C	L1	L2	CH	Conf. Pack.
6244000440200	1/8	7.5	8.5	17.5	37	17.5	12	10
6244000440300	1/4	11	11	23	49	23	12	10
6244000440400	3/8	11.5	12	25.5	54	25.5	15	10
6244000440500	1/2	14	15	29.5	64	29.5	20	10

# 62450

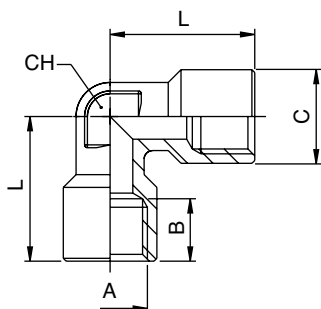
RACCORDO A T MASCHIO LATERALE - OFF SET MALE TEE



Codice Code	A	B	B1	C	L1	L2	CH	Conf. Pack.
6245000440200	1/8	7.5	8.5	18.5	36	18.5	12	10
6245000440300	1/4	11	11	24.5	47.5	24.5	12	10
6245000440400	3/8	11.5	12	27	52.5	27	15	10
6245000440500	1/2	14	15	32	61.5	32	20	10

# 62510

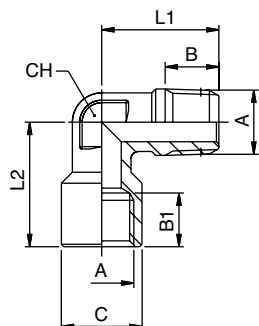
RACCORDO A L FEMMINA - FEMALE ELBOW



Codice Code	A	C	B	L	CH	Conf. Pack.
6251000440200	1/8	13	8.5	21	10	10
6251000440300	1/4	16.5	11	25.5	12	10
6251000440400	3/8	20.5	12	28	15	10
6251000440500	1/2	25.5	15	32	20	10

# 62520

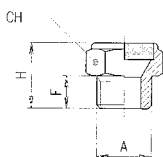
RACCORDO A L MASCHIO FEMMINA - MALE FEMALE ELBOW



Codice Code	A	B	B1	C	L1	L2	CH	Conf. Pack.
6252000440200	1/8	7.5	8.5	21	18	21	10	10
6252000440300	1/4	11	11	25.5	24	25.5	12	10
6252000440400	3/8	11.5	12	28	27	28	15	10
6252000440500	1/2	14	15	32	29.5	32	20	10

# 62540

SILENZIATORE - SILENCER

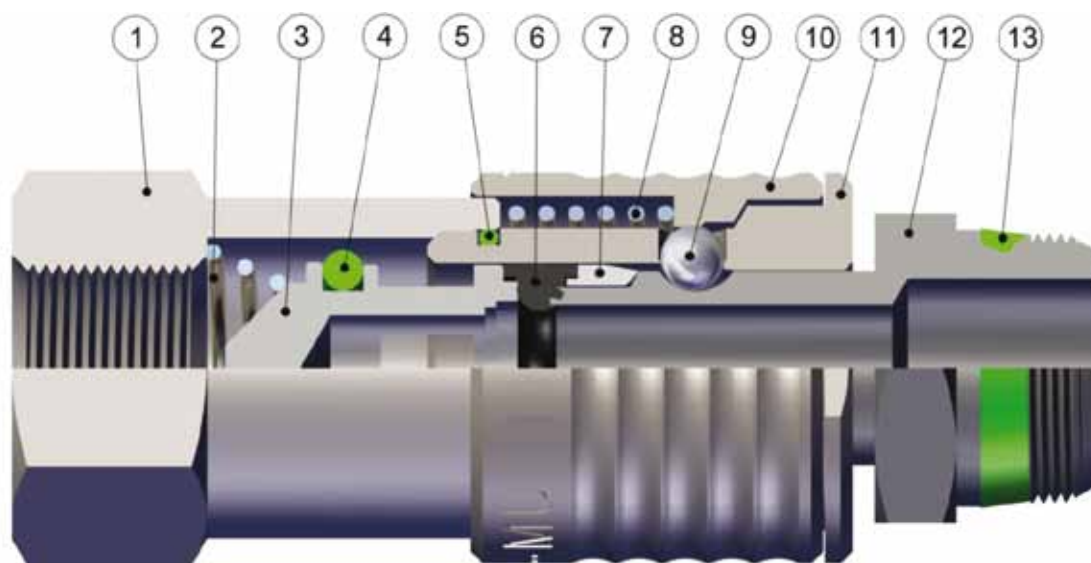


**dB =** Abbattimento acustico (dB) a 6 bar  
Acoustic fading (dB) at 6 bar

CARATTERISTICHE TECNICHE / TECHNICAL CHARACTERISTICS

Pressione massima / maximum pressure: **10 bar**  
 Temperatura minima / minimum temperature: **-20°C**  
 Temperatura massima / maximum temperature: **+300°C**  
 Soglia di filtrazione / filtration threshold: **76 µm**

Codice Code	A	F	H	CH	dB	Conf. Pack.
6254000001	1/8	8	15	14	30.6	25
6254000002	1/4	8	15	17	33	25
6254000003	3/8	10	18	22	35	25
6254000004	1/2	12	22	27	23	25

**MULTIPRESA IN ACCIAIO INOX**  
**STAINLESS STEEL MULTISOCKET**
**SERIE 63000**
**Caratteristiche Tecniche / Technical Characteristics**

**Materiali e Componenti / Component Parts and Materials**

- |   |  |
|---|--|
| 1 Attacco terminale in acciaio INOX AISI 316L     | 1 AISI 316L Steel coupling back part   |
| 2 Molla otturatore in acciaio INOX AISI 302       | 2 AISI 302 Steel shutter thrust spring |
| 3 Otturatore in acciaio INOX AISI 316L            | 3 AISI 316L Steel shutter              |
| 4 Guarnizione O-Ring Otturatore in FKM alimentare | 4 Food FKM shutter O-Ring seal         |
| 5 Guarnizione O-Ring corpo in FKM alimentare      | 5 Food FKM body O-Ring seal            |
| 6 Guarnizione innesto in FKM alimentare           | 6 Food FKM plug seal                   |
| 7 Anello guida innesto in acciaio INOX AISI 316L  | 7 AISI 316L Steel guide ring coupling  |
| 8 Molla ghiera in acciaio INOX AISI 302           | 8 AISI 302 Steel ring nut spring       |
| 9 Sfera in acciaio INOX AISI 420                  | 9 AISI 420 Steel ball                  |
| 10 Ghiera in acciaio INOX AISI 316L               | 10 AISI 316L Steel sleeve              |
| 11 Corpo in acciaio INOX AISI 316L                | 11 AISI 316L Steel body                |
| 12 Innesto in acciaio INOX AISI 316L              | 12 AISI 316L Steel plug outline        |
| 13 Guarnizione filetto in FKM alimentare          | 13 Food FKM thread packing             |

**Pressioni / Pressures**

Pressione minima / Minimum pressure: **0 bar (0 MPa)**  
 Pressione massima / Maximum pressure: **16 bar (1.6 MPa)**

**Temperature / Temperatures**

Temperatura minima / Minimum temperature: **-15 °C**  
 Temperatura massima / Maximum temperature: **+200 °C**

**Filettature / Threads**

Gas cilindrica conforme ISO 228 Classe A / Parallel gas in conformity with ISO 228 Class A.  
 Gas conica "short" / "Short" tapered thread.

**Tubi di collegamento / Connection Tubes**

Tubi in materiale plastico, lineari o spiralati. Tubi in gomma.

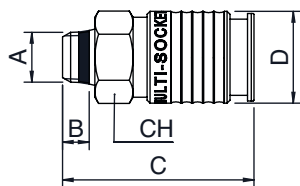
*Flexible tubes in plastic and rubber.*

**Fluidi compatibili / Fluids**

**Aria compressa.**  
**Fluidi per Industria alimentare e chimica compatibili con i componenti del raccordo.**  
*Compressed air.*  
*Fluid for food and chemical industry compatible with fitting components.*

# 63190

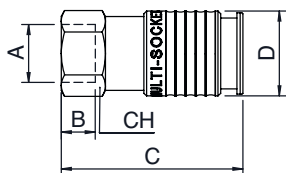
PRESA CON ATTACCO MASCHIO SHORT - MALE SOCKET (SHORT)



Codice Code	A	B	C	D	CH	Conf. Pack.
631900002	1/4	7	50	24	21	2
631900003	3/8	7.5	50.5	24	21	2
631900004	1/2	9	52	24	21	2

# 63192

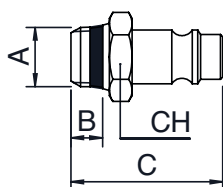
PRESA CON ATTACCO FEMMINA - FEMALE SOCKET



Codice Code	A	B	C	D	CH	Conf. Pack.
631920002	1/4	11	51.5	24	21	2
631920003	3/8	11.5	52	24	21	2
631920004	1/2	15	56.5	24	24	2

# 63260

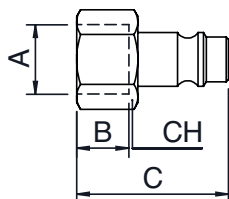
INNESTO PROFILO EUROPEO CON ATTACCO MASCHIO SHORT - MALE PLUG EUROPEAN PROFILE (SHORT)



Codice Code	A	B	C	D	CH	Conf. Pack.
632600002	1/4	7	33.5	-	17	2
632600003	3/8	7.5	34	-	19	2
632600004	1/2	9	36	-	24	2

# 63262

INNESTO PROFILO EUROPEO CON ATTACCO FEMMINA - FEMALE PLUG EUROPEAN PROFILE



Codice Code	A	B	C	D	CH	Conf. Pack.
6326200440300	1/4	11	33	-	17	2
6326200440400	3/8	11.5	33.5	-	19	2
6326200440500	1/2	15	37	-	24	2

